

26

# Portsmouth to Southampton Central



# TRAIN TIMES

12 December 2010 to 21 May 2011

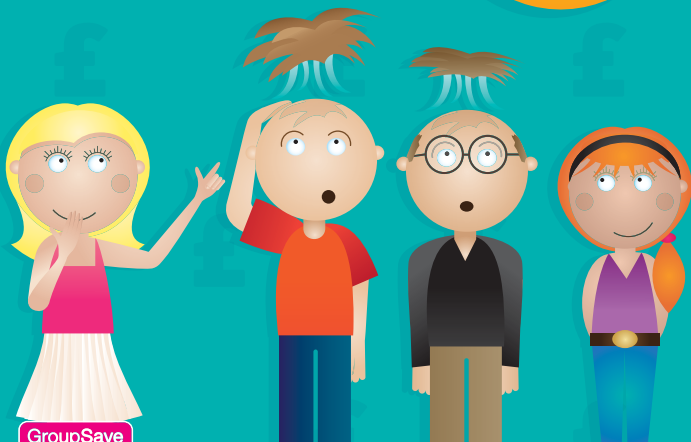
- Southampton Central
- St Denys
- Bitterne
- Woolston
- Sholing
- Netley
- Hamble
- Bursledon
- Swanwick
- Fareham**
- Portchester
- Cosham
- Hilsea
- Fratton
- Portsmouth & Southsea**
- Portsmouth Harbour**

# Save up to 50% with our “two pay” deal.

Two pay and the rest get hair raising savings, when 3 or 4 travel together off-peak with GroupSave.



Add up to 4 accompanying kids for **£1 each**



Visit [southwesttrains.co.uk](http://southwesttrains.co.uk) or call 0845 6000 650 for more information.

**SOUTH WEST TRAINS**

Minimum of two full fares cover 3 or 4 travelling together. No further discount are available to Railcard holders.

## Your timetable

This pocket timetable shows train services between Portsmouth, Fareham and Southampton Central. Also trains between Havant and Southampton Central.

For the full service between Portsmouth, Cosham, Portchester and Fareham, also between Havant and Fareham, please refer to pocket timetable 18.



### Engineering work

Engineering work has to be carried out to maintain and improve the rail network.

This work is normally done at weekends, overnight or on public holidays and sometimes we need to change train services or run buses instead.

We advise that you check for any changes to train times before using weekend, late evening or early morning services. Please look for the 'Engineering Works' posters at stations or visit our website at [southwesttrains.co.uk](https://southwesttrains.co.uk)



### Buy a ticket before you board

You need to buy a valid ticket before you board one of our trains. We know that the vast majority of our passengers buy a valid ticket before travelling and we have a duty to these passengers to make sure no one travels without paying. For this reason, we run a penalty fares scheme across most of our network.

If you travel to or from a station within the penalty fares area without a valid ticket, you may be liable for a penalty of £20 or twice the single fare to the next station at which your train stops (whichever is higher). You will then be required to buy a ticket for the remainder of your journey.

We have a policy to prosecute all deliberate fare evaders whenever possible.



## Cycles on trains

The services in this timetable have limited room for cycles and we have to apply some restrictions.

The ★ symbol shows restricted trains - these restrictions are explained in the 'Notes' section.

We will carry folding cycles on any train as long as they can be folded small enough to be carried safely in the luggage rack. Cycles are not allowed on buses that replace trains during engineering work.



## No smoking policy

For the comfort and safety of all our passengers, we do not allow smoking on any of our trains.

Also, in line with all other UK train companies, we enforce a complete no smoking policy at all our stations. All areas of the station are smoke-free irrespective of whether they are enclosed or otherwise.

## Comments and suggestions

We welcome your comments, suggestions and complaints about any aspect of our service. You can contact our Customer Service Centre on 0845 6000 650. We will work hard to deal with your concerns to your satisfaction and within the timescales explained in our Passengers' Charter.

There are also organisations that you can contact if you are unhappy with our response, details of these can be found in our Passengers' Charter and on our website [southwesttrains.co.uk](http://southwesttrains.co.uk). We will also advise you of these if you tell us that you are unhappy with our response.

## The Passengers' Panel

If you would like direct input into improving services on the network, consider joining our Passengers' Panel.

### Passengers' Panel

Friars Bridge Court, 41-45 Blackfriars Road, London SE1 8NZ  
Contact the Passenger Panel at [www.swtpp.co.uk](http://www.swtpp.co.uk)

**Monday to Friday**
**Portsmouth, Cosham, Fareham and Swanwick to Southampton Central**

Train Operator	Notes		SN ■	SW ■	GW	SN ■	SW ■	SN ■	GW	SN ■	SN ■	SW ■	SN ■	GW	SN ■	SW ■	SN ■	GW	SN ■	SW ■	GW	SN ■	GW	SN ■	SW ■	SN ■	GW
Portsmouth Harbour	\$☰	dep	0500b		0600		0615n	0623b	0705			0729c		0823		0833	0859b	0923		0933		0959b	1023		1033	1059b	1123
Portsmouth & Southsea	\$	dep	0505b	0516	0604		0623	0628b	0709			0738		0827		0838	0903b	0927		0938		1003b	1027		1038	1103b	1127
Fratton	\$P	dep	0509b	0520	0608		0627	0632b	0713			0742		0831		0842	0907b	0931		0942		1007b	1031		1042	1107b	1131
Hilsea	\$	dep	0513b	0524	0556b		0631	0636b	0703b			0746		0818b		0846	0911b			0946		1011b			1046	1111b	
<b>Havant</b>	P	dep	0517		0540c	0620		0640	0653c	0719	0731		0803		0837		0923		0939		0959	1020		1037		1119	
Cosham	\$P	dep	0524	0530	0615	0627	0636	0650	0721	0726	0738	0751	0809	0839	0845	0851	0930	0939	0946	0951	1005	1028	1039	1046	1051	1126	1139
Portchester	\$	dep	0528	0535	0608b		0641	0654	0713b	0730		0756	0813	0828b	0849	0856	0921b			0956		1032		1046	1056	1130	
<b>Fareham</b>	\$P	arr	0533	0540	0623	0636	0646	0659	0728	0735	0746	0801	0818	0846	0854	0901	0937	0946	0953	1001	1014	1037	1046	1053	1101	1135	1146
<b>Fareham</b>	P	dep	0534	0541	0624	0637	0647	0700	0729	0736	0747	0803	0819	0847	0855	0903	0938	0947	0954	1003	1014	1038	1047	1054	1103	1136	1147
Swanwick	P	dep	0540	0547		0643	0653	0706		0742	0753	0809	0826		0901	0909	0944	1000		1009		1044		1100	1109	1142	
Bursledon	P	dep		0551			0657					0813	0829			0913				1013					1113		
Hamble		dep		0554			0700					0816	0832			0916				1016					1116		
Netley	◆P	dep	0546	0556			0702			0748	0759	0818	0834			0918				1018					1118		
Sholing		dep		0600			0706					0822	0838			0922				1022					1122		
Woolston	P	dep	0550	0602			0708			0752	0804	0824	0840			0924				1024					1124		
Bitterne	P	dep		0606			0712					0828	0843			0928				1028					1128		
St Denys	‡	dep		0609			0715				0808	0831	0846			0931				1031					1131		
<b>Southampton Central</b>	‡P☰	arr	0559	0614	0645	0702	0721	0725	0750	0801	0813	0838	0852	0908	0919	0938	1001	1008	1020	1038	1041	1101	1108	1119	1138	1201	1208

**Notes**

- b Change at Fareham.  
c Change at Fratton.

- n Change at Portsmouth & Southsea.  
(Connection leaves from low level platform).

For timetable notes and symbols see page 22.

**Monday to Friday**
**Portsmouth, Cosham, Fareham and Swanwick to Southampton Central**

Train Operator	Notes		SN I	SW I	SN I	GW	SN I	SW I	SN I	GW	SN I	SW I	SN I	GW	SN I	SW I	SN I	GW	SN I	SW I	SN I	GW	SN I	SW I	SN I	GW	SN I
<b>Portsmouth Harbour</b>	\$☰	dep		1129c	1159b	<b>1223</b>		1229c	1259b	<b>1323</b>		1329c	1359b	<b>1423</b>		1429c	1459b	<b>1523</b>		1529c	1559b	<b>1623</b>		1629c	1659b	<b>1723</b>	<b>★</b>
<b>Portsmouth &amp; Southsea</b>	\$	dep		<b>1138</b>	1203b	<b>1227</b>		<b>1238</b>	1303b	<b>1327</b>		<b>1338</b>	1403b	<b>1427</b>		<b>1438</b>	1503b	<b>1527</b>		<b>1538</b>	1603b	<b>1627</b>		<b>1638</b>	1703b	<b>1727</b>	
Fratton	\$P	dep		<b>1142</b>	1207b	<b>1231</b>		<b>1242</b>	1307b	<b>1331</b>		<b>1342</b>	1407b	<b>1431</b>		<b>1442</b>	1507b	<b>1531</b>		<b>1542</b>	1607b	<b>1631</b>		<b>1642</b>	1707b	<b>1731</b>	
Hilsea	\$	dep		<b>1146</b>	1211b			<b>1246</b>	1311b			<b>1346</b>	1411b			<b>1446</b>	1511b			<b>1546</b>	1611b			<b>1646</b>	1711b		
<b>Havant</b>	P	dep	<b>1137</b>		<b>1219</b>		<b>1237</b>		<b>1319</b>		<b>1337</b>		<b>1419</b>		<b>1437</b>		<b>1519</b>		<b>1537</b>		<b>1619</b>		<b>1637</b>		<b>1719</b>		<b>1737</b>
Cosham	\$P	dep	<b>1146</b>	<b>1151</b>	<b>1226</b>	<b>1239</b>	<b>1246</b>	<b>1251</b>	<b>1326</b>	<b>1339</b>	<b>1346</b>	<b>1351</b>	<b>1426</b>	<b>1439</b>	<b>1446</b>	<b>1451</b>	<b>1526</b>	<b>1539</b>	<b>1546</b>	<b>1551</b>	<b>1626</b>	<b>1639</b>	<b>1646</b>	<b>1651</b>	<b>1727</b>	<b>1739</b>	<b>1746</b>
Portchester	\$	dep		<b>1156</b>	<b>1230</b>			<b>1256</b>	<b>1330</b>			<b>1356</b>	<b>1430</b>			<b>1456</b>	<b>1530</b>			<b>1556</b>	<b>1630</b>			<b>1656</b>	<b>1731</b>		
<b>Fareham</b>	\$P	arr	<b>1153</b>	<b>1201</b>	<b>1235</b>	<b>1246</b>	<b>1253</b>	<b>1301</b>	<b>1335</b>	<b>1346</b>	<b>1353</b>	<b>1401</b>	<b>1435</b>	<b>1446</b>	<b>1453</b>	<b>1501</b>	<b>1535</b>	<b>1546</b>	<b>1553</b>	<b>1601</b>	<b>1635</b>	<b>1646</b>	<b>1653</b>	<b>1701</b>	<b>1736</b>	<b>1746</b>	<b>1753</b>
<b>Fareham</b>	P	dep	<b>1154</b>	<b>1203</b>	<b>1236</b>	<b>1247</b>	<b>1254</b>	<b>1303</b>	<b>1336</b>	<b>1347</b>	<b>1356</b>	<b>1403</b>	<b>1436</b>	<b>1447</b>	<b>1454</b>	<b>1503</b>	<b>1536</b>	<b>1547</b>	<b>1554</b>	<b>1603</b>	<b>1636</b>	<b>1647</b>	<b>1657</b>	<b>1703</b>	<b>1737</b>	<b>1747</b>	<b>1754</b>
Swanwick	P	dep	<b>1200</b>	<b>1209</b>	<b>1242</b>		<b>1300</b>	<b>1309</b>	<b>1342</b>		<b>1402</b>	<b>1409</b>	<b>1442</b>		<b>1500</b>	<b>1509</b>	<b>1542</b>		<b>1600</b>	<b>1609</b>	<b>1642</b>			<b>1709</b>	<b>1743</b>		<b>1800</b>
Bursledon	P	dep		<b>1213</b>				<b>1313</b>				<b>1413</b>				<b>1513</b>				<b>1613</b>				<b>1713</b>			
Hamble		dep		<b>1216</b>				<b>1316</b>				<b>1416</b>				<b>1516</b>				<b>1616</b>				<b>1716</b>			
Netley	◆P	dep		<b>1218</b>				<b>1318</b>				<b>1418</b>				<b>1518</b>				<b>1618</b>				<b>1718</b>	<b>1749</b>		
Sholing		dep		<b>1222</b>				<b>1322</b>				<b>1422</b>				<b>1522</b>				<b>1622</b>				<b>1722</b>			
Woolston	P	dep		<b>1224</b>				<b>1324</b>				<b>1424</b>				<b>1524</b>				<b>1624</b>				<b>1724</b>	<b>1753</b>		
Bitterne	P	dep		<b>1228</b>				<b>1328</b>				<b>1428</b>				<b>1528</b>				<b>1628</b>				<b>1728</b>			
St Denys	‡	dep		<b>1231</b>				<b>1331</b>				<b>1431</b>				<b>1531</b>				<b>1631</b>				<b>1731</b>	<b>1758</b>		
<b>Southampton Central</b>	‡P☰	arr	<b>1219</b>	<b>1238</b>	<b>1259</b>	<b>1308</b>	<b>1319</b>	<b>1338</b>	<b>1359</b>	<b>1408</b>	<b>1419</b>	<b>1439</b>	<b>1459</b>	<b>1508</b>	<b>1519</b>	<b>1538</b>	<b>1559</b>	<b>1608</b>	<b>1619</b>	<b>1638</b>	<b>1701</b>	<b>1708</b>	<b>1728</b>	<b>1738</b>	<b>1803</b>	<b>1808</b>	<b>1820</b>

**Notes**

- G** Runs via Eastleigh.  
**b** Change at Fareham.  
**c** Change at Fratton.

**★** Passengers travelling with cycles may not join or leave services shown in red. Please see Southern publications for details.

For timetable notes and symbols see page 22.

**Monday to Friday**
**Portsmouth, Cosham, Fareham and Swanwick to Southampton Central**

Train Operator	Notes		SW 1	GW	SN 1 ★	GW	SN 1 ★	SW 1	SN 1 ★	GW	SN 1 ★	SW 1	SN 1 ★	GW	SN 1	SW 1	SN 1	GW	SN 1	SW 1	SN 1	SW 1	SW 1 E				
Portsmouth Harbour	\$☰	dep	1733		1759b	1823		1828c	1859b	1923			1959b	2023			2059b	2123		2128c	2154b	2228c	2324				
Portsmouth & Southsea	\$	dep	1738		1803b	1827		1838	1903b	1927		1938	2003b	2027		2038	2103b	2127		2138	2159b	2238	2329				
Fratton	\$P	dep	1742		1807b	1831		1842	1907b	1931		1942	2007b	2031		2042	2107b	2131		2142	2203b	2242	2333				
Hilsea	\$	dep	1746		1811b			1846	1911b			1946	2011b			2046	2111b			2146	2207b	2246	2337				
<b>Havant</b>	P	dep		1758	1823		1837		1920		1937		2022		2037		2126		2137		2226	2231h	2319c				
Cosham	\$P	dep	1751	1805	1830	1839	1844	1851	1929	1939	1946	1951	2029		2044	2051	2134		2144	2151	2234	2251	2342				
Portchester	\$	dep	1756		1834			1856	1933			1956	2021b		2048	2056	2138		2156	2217b	2256	2347					
<b>Fareham</b>	\$P	arr	1801	1812	1839	1846	1852	1901	1938	1946	1954	2001	2036	2046	2053	2101	2143	2147	2151	2201	2242	2301	2352				
<b>Fareham</b>	P	dep	1803	1813	1840	1847	1853	1903	1939	1947	1955	2003	2037	2047	2054	2103	2143	2148	2152	2203	2243	2303	2353				
Swanwick	P	dep	1809		1846		1859	1909	1945		2001	2009	2043		2100	2109	2149		2158	2209	2249	2309					
Bursledon	P	dep	1813					1913				2013				2113			2213		2313						
Hamble		dep	1816					1916				2016				2116			2216		2316						
Netley	◆P	dep	1818					1918				2018				2118			2218		2318						
Sholing		dep	1822					1922				2022				2122			2222		2322						
Woolston	P	dep	1824					1924				2024				2124	2158		2224		2324						
Bitterne	P	dep	1828					1928				2028				2128			2228		2328						
St Denys	‡	dep	1831					1931				2031				2131	2202		2231		2331		0031w				
<b>Southampton Central</b>	‡P☰	arr	1838	1841	1905	1908	1920	1938	2003	2008	2018	2038	2101	2108	2119	2138	2207	2221	2216	2239	2307	2339	0036w				

**Notes**

- E Engineering work may affect this service - check before travelling.
- b Change at Fareham.
- c Change at Fratton.

- h Change at Hilsea.
- w Change at Eastleigh.

- ★ Passengers travelling with cycles may not join or leave services shown in red. Please see Southern publications for details.

For timetable notes and symbols see page 22.

# Saturday

# Portsmouth, Cosham, Fareham and Swanwick to Southampton Central

Train Operator	Notes		SN I	SW I	SN I	GW	SN I	SN I G	SW I	GW	SN I	SN I G	SW I	SN I	GW	SN I	SW I	SN I	GW	SN I G	SW I	GW	SN I	GW	SN I	SW I	SN I
Portsmouth Harbour	\$	dep		0443c		0600			0629c	0705			0729c	0759b	0823		0829c	0859b	0923		0929c		0959b	1023		1029c	1059b
Portsmouth & Southsea	\$	dep		0516		0604			0638	0709			0738	0803b	0827		0838	0903b	0927		0938		1003b	1027		1038	1103b
Fratton	\$	dep		0520		0608			0642	0714			0742	0807b	0831		0842	0907b	0931		0942		1007b	1031		1042	1107b
Hilsea	\$	dep		0524		0603b			0646				0746	0811b			0846	0911b		0946		1011b		1046		1046	1111b
<b>Havant</b>	P	dep	0516		0539	0549c	0624	0637		0646c	0723	0737		0820		0837		0919		0937		1000	1019		1037		1119
Cosham	\$	dep	0523	0531	0549	0619	0630	0646	0651	0721	0730	0746	0751	0828	0839	0846	0851	0926	0939	0946	0951	1006	1026	1039	1046	1051	1126
Portchester	\$	dep	0527	0535		0613b	0634		0656	0718b	0734		0756	0832		0856	0930		0946	0953	0956	1015	1030	1046	1056	1130	
<b>Fareham</b>	\$	arr	0532	0540	0557	0627	0639	0653	0701	0729	0739	0753	0801	0837	0846	0853	0901	0935	0946	0953	1001	1015	1035	1046	1053	1101	1135
<b>Fareham</b>	P	dep	0533	0541	0558	0628	0640	0657	0703	0730	0739	0757	0803	0838	0847	0854	0903	0936	0947	0957	1003	1016	1036	1047	1054	1103	1136
Swanwick	P	dep	0539	0548	0604	0646			0709		0745		0809	0844		0900	0909	0942			1009		1042		1100	1109	1142
Bursledon	P	dep		0551					0713				0813				0913				1013					1113	
Hamble		dep		0555					0716				0816				0916				1016					1116	
Netley	◆ P	dep	0545	0557					0718				0818				0918				1018					1118	
Sholing		dep		0601					0722				0822				0922				1022					1122	
Woolston	P	dep	0549	0603					0724				0824				0924				1024					1124	
Bitterne	P	dep		0606					0728				0828				0928				1028					1128	
St Denys	‡	dep		0609					0731				0831				0931				1031					1131	
<b>Southampton Central</b>	‡ P	arr	0558	0614	0624	0649	0705	0728	0738	0751	0803	0828	0838	0901	0908	0919	0938	0959	1008	1028	1038	1040	1059	1108	1119	1138	1159

## Notes

- G Runs via Eastleigh.
- b Change at Fareham.
- c Change at Fratton.

For timetable notes and symbols see page 22.



# Saturday

## Portsmouth, Cosham, Fareham and Swanwick to Southampton Central

Train Operator	Notes		GW	SN G	SW I	SN I	GW	SN I	SW I	SN I	GW	SN I	SW I	SN I	GW	SN I	SW I	SN I	GW	SN G	SW I	SN I	GW	SN I	SW I	SN I	GW
Portsmouth Harbour	\$	dep	1123		1129c	1159b	1223		1229c	1259b	1323		1329c	1359b	1423		1429c	1459b	1523		1529c	1559b	1623		1629c	1659b	1723
Portsmouth & Southsea	\$	dep	1127		1138	1203b	1227		1238	1303b	1327		1338	1403b	1427		1438	1503b	1527		1538	1603b	1627		1638	1703b	1727
Fratton	\$	dep	1131		1142	1207b	1231		1242	1307b	1331		1342	1407b	1431		1442	1507b	1531		1542	1607b	1631		1642	1707b	1731
Hilsea	\$	dep			1146	1211b			1246	1311b			1346	1411b			1446	1511b			1546	1611b			1646	1711b	
<b>Havant</b>	P	dep		1137		1219		1237		1319		1337		1419		1437		1519		1537		1619		1637		1719	
Cosham	\$	dep	1139	1146	1151	1226	1239	1246	1251	1326	1339	1346	1351	1426	1439	1446	1451	1526	1539	1546	1551	1626	1639	1646	1651	1726	1739
Portchester	\$	dep			1156	1230			1256	1330			1356	1430			1456	1530			1556	1630			1656	1730	
<b>Fareham</b>	\$	arr	1146	1153	1201	1235	1246	1253	1301	1335	1346	1353	1401	1435	1446	1453	1501	1535	1546	1553	1601	1635	1646	1653	1701	1735	1746
<b>Fareham</b>	P	dep	1147	1157	1203	1236	1247	1254	1303	1336	1347	1356	1403	1436	1447	1454	1503	1536	1547	1557	1603	1636	1647	1654	1703	1736	1747
Swanwick	P	dep			1209	1242		1300	1309	1342		1402	1409	1442		1500	1509	1542			1609	1642		1700	1709	1742	
Bursledon	P	dep			1213				1313				1413				1513				1613				1713		
Hamble		dep			1216				1316				1416				1516				1616				1716		
Netley	◆	dep			1218				1318				1418				1518				1618				1718		
Sholing		dep			1222				1322				1422				1522				1622				1722		
Woolston	P	dep			1224				1324				1424				1524				1624				1724		
Bitterne	P	dep			1228				1328				1428				1528				1628				1728		
St Denys	‡	dep			1231				1331				1431				1531				1631				1731		
<b>Southampton Central</b>	‡	arr	1208	1228	1238	1259	1308	1319	1338	1359	1408	1419	1439	1459	1508	1519	1538	1559	1608	1628	1638	1659	1708	1719	1738	1759	1808

### Notes

- G Runs via Eastleigh.
- b Change at Fareham.
- c Change at Fratton.

For timetable notes and symbols see page 22.

**Saturday**
**Portsmouth, Cosham, Fareham and Swanwick to Southampton Central**

Train Operator	Notes		SN G	SW I	GW	SN I	GW	SN I	SW I	SN I	GW	SN I	SW I	SN I	GW	SN I	SW I	SN I	SN I	SW I	SN I	SW I	SW I				
Portsmouth Harbour	\$	dep		1733		1759b	1823		1829c	1859b	1923		1929c	1959b	2023		2028c	2059b		2118c	2154b	2218c	2324				
Portsmouth & Southsea	\$	dep		1738		1803b	1827		1838	1903b	1927		1938	2003b	2027		2038	2103b		2138	2159b	2238	2329				
Fratton	\$	dep		1742		1807b	1831		1842	1907b	1931		1942	2007b	2031		2042	2107b		2142	2203b	2242	2333				
Hilsea	\$	dep		1746		1811b			1846	1911b			1946	2011b			2046	2111b		2146	2207b	2246	2337				
<b>Havant</b>	P	dep	1737		1800	1819		1837		1919		1937		2026		2037		2123	2140		2226	2231h	2319c				
Cosham	\$	dep	1746	1751	1806	1826	1839	1846	1851	1926	1939	1946	1951	2032		2046	2051	2129	2147	2151	2234	2251	2342				
Portchester	\$	dep		1756		1830			1856	1930			1956	2036			2056	2133		2156	2217b	2256	2347				
<b>Fareham</b>	\$	arr	1753	1801	1814	1835	1846	1853	1901	1935	1946	1953	2001	2041	2045	2053	2101	2138	2154	2201	2241	2301	2352				
<b>Fareham</b>	P	dep	1757	1803	1815	1836	1847	1854	1903	1936	1947	1957	2003	2042	2047	2054	2103	2139	2155	2203	2242	2303	2353				
Swanwick	P	dep		1809		1842		1900	1909	1942			2009	2048		2100	2109	2145	2201	2209	2248	2309					
Bursledon	P	dep		1813					1913				2013				2113			2213		2313					
Hamble		dep		1816					1916				2016				2116			2216		2316					
Netley	◆ P	dep		1818					1918				2018				2118			2218		2318					
Sholing		dep		1822					1922				2022				2122			2222		2322					
Woolston	P	dep		1824					1924				2024				2124			2224		2324					
Bitterne	P	dep		1828					1928				2028				2128			2228		2328					
St Denys	‡	dep		1831					1931				2031				2131			2231		2331		0029w			
<b>Southampton Central</b>	‡ P	arr	1828	1838	1843	1859	1908	1919	1938	1959	2009	2028	2038	2105	2110	2119	2138	2202	2220	2239	2305	2336	0034w				

**Notes**

- G** Runs via Eastleigh.
- E** Engineering work may affect this service - check before travelling.
- b** Change at Fareham.
- c** Change at Fratton.
- h** Change at Hilsea.
- w** Change at Eastleigh.

For timetable notes and symbols see page 22.

**Sunday**
**Portsmouth, Cosham, Fareham and Swanwick to Southampton Central**

Train Operator	Notes		SW E	SW I	SN I	SW I	SN I	GW	SW I	SN I	SW I	SN I	GW	SW I	SN I	GW	SW I	SN I	GW	SW I	SN I	GW	SW I	SN I	GW	SW I	SN I
Portsmouth Harbour	\$	dep	0637	0732c		0832c		0908	0932c		1032c		1108	1132c			1232c		1308	1332c		1408	1432c		1508	1532c	
Portsmouth & Southsea	\$	dep	0642	0742		0842		0912	0942		1042		1112	1142			1242		1312	1342		1412	1442		1512	1542	
Fratton	\$	dep	0646	0746		0846		0916	0946		1046		1116	1146			1246		1316	1346		1416	1446		1516	1546	
Hilsea	\$	dep	0650	0750		0850			0950		1050			1150			1250			1350			1450			1550	
<b>Havant</b>	P	dep		0710c	0758	0811c	0858		0911c	0958	1017c	1058		1117c	1158	1210	1217c	1258		1317c	1358		1417c	1458		1517c	1558
Cosham	\$	dep	0655	0755	0805	0855	0905	0923	0955	1006	1055	1106	1123	1155	1205	1223	1255	1305	1323	1355	1405	1423	1455	1505	1523	1555	1605
Portchester	\$	dep	0700	0800		0900			1000		1100			1200			1300			1400			1500			1600	
Fareham	\$	arr	0705	0805	0813	0905	0913	0931	1005	1014	1105	1114	1131	1205	1213	1231	1305	1313	1331	1405	1413	1431	1505	1513	1531	1605	1613
Fareham	P	dep	0706	0806	0814	0906	0914	0932	1006	1015	1106	1115	1132	1206	1214	1232	1306	1314	1332	1406	1414	1432	1506	1514	1532	1606	1614
Swanwick	P	dep	0712	0812	0820	0912	0920		1012	1021	1112	1121		1212	1220		1312	1320		1412	1420		1512	1520		1612	1620
Bursledon	P	dep	0716	0816		0916			1016		1116			1216			1316			1416			1516			1616	
Hamble		dep	0719	0819		0919			1019		1119			1219			1319			1419			1519			1619	
Netley	◆ P	dep	0721	0821		0921			1021		1121			1221			1321			1421			1521			1621	
Sholing		dep	0725	0825		0925			1025		1125			1225			1325			1425			1525			1625	
Woolston	P	dep	0727	0827		0927			1027		1127			1227			1327			1427			1527			1627	
Bitterne	P	dep	0731	0831		0931			1031		1131			1231			1331			1431			1531			1631	
St Denys	‡	dep	0734	0834		0934			1034		1134			1234			1334			1434			1534			1634	
Southampton Central	‡ P	arr	0740	0840	0844	0940	0944	0953	1040	1044	1140	1144	1153	1240	1244	1253	1340	1344	1354	1440	1444	1453	1540	1544	1553	1640	1644

**Notes**

- E Engineering work may affect this service - check before travelling.
- c Change at Fratton.

For timetable notes and symbols see page 22.

**Sunday**
**Portsmouth, Cosham, Fareham and Swanwick to Southampton Central**

Train Operator	Notes		GW	GW	SW f	SN f	GW	SW f	SN f	GW	GW	SW f	SN f	GW	SW f	SN f	GW	SW f	SN f	SW f	SN f	GW	SW f	SW f			
Portsmouth Harbour	\$	dep	1608	1617b	1632c		1708	1732c		1808	1817b	1832c		1908	1932c		2008	2032c		2132c		2203	2232c	2317			
Portsmouth & Southsea	\$	dep	1612	1622b	1642		1712	1742		1812	1822b	1842		1912	1942		2012	2042		2142		2212	2242	2322			
Fratton	\$	dep	1616	1626b	1646		1716	1746		1816	1826b	1846		1916	1946		2016	2046		2146		2216	2246	2326			
Hilsea	\$	dep		1630b	1650			1750			1830b	1850			1950			2050		2150			2250	2330			
<b>Havant</b>	P	dep		1648		1658		1717c	1758		1848		1858		1917c	1958		2017c	2058	2117c	2158		2217c	2251c			
Cosham	\$	dep	1623	1655	1659	1705	1723	1755	1805	1823	1855	1859	1905	1923	1955	2005		2055	2105	2155	2205		2255	2335			
Portchester	\$	dep		1640b	1703			1800			1840b	1903			2000			2100		2200			2300	2340			
<b>Fareham</b>	\$	arr	1631	1702	1708	1714	1731	1805	1813	1831	1902	1908	1913	1931	2005	2013	2031	2105	2113	2205	2213	2231	2305	2345			
<b>Fareham</b>	P	dep	1632	1703	1709	1715	1732	1806	1814	1832	1903	1909	1914	1932	2006	2014	2032	2106	2114	2206	2214	2232	2306	2346			
Swanwick	P	dep			1716	1722		1812	1820			1916	1922		2012	2020		2112	2120	2212	2220		2312				
Bursledon	P	dep			1719			1816				1919			2016			2116		2216			2316				
Hamble		dep			1723			1819				1923			2019			2119		2219			2319				
Netley	◆ P	dep			1725			1821				1925			2021			2121		2221			2321				
Sholing		dep			1729			1825				1929			2025			2125		2225			2325				
Woolston	P	dep			1731			1827				1931			2027			2127		2227			2327				
Bitterne	P	dep			1734			1831				1934			2031			2131		2231			2331				
St Denys	‡	dep			1738			1834				1938			2034			2134		2234			2334				
<b>Southampton Central</b>	‡ P	arr	1653	1724	1743	1748	1753	1840	1844	1853	1924	1943	1948	1953	2040	2046	2053	2140	2145	2240	2244	2253	2340	0031w	0036w		

**Notes**

- b Change at Fareham.
- c Change at Fratton.
- w Change at Eastleigh.

For timetable notes and symbols see page 22.

**Monday to Friday**
**Southampton Central to Swanwick, Fareham, Cosham and Portsmouth**

Train Operator	Notes		SN ★ ☑	SN ★ ☑	SW ☑	GW	SN ☑ ★	SW ☑	SN ☑ ★	GW	SW ☑	SN ☑	SN ☑	SW ☑	GW	SN ☑	SN ☑	SW ☑	GW	SN ☑	SN ☑	SW ☑	GW	SN ☑	SN ☑	SW ☑	GW
<b>Southampton Central</b>	‡☑	dep	<b>0548</b>	<b>0610</b>	0621	0653	<b>0706</b>	0717	<b>0733</b>	0742	0751	0810	0833	0844	0905	0910	0933	0944	1005	1013	1033	1044	1105	1113	1133	1144	1205
St Denys	‡	dep			0628			0723			0757	0815		0849				0949				1049				1149	
Bitterne	☑	dep			0630			0725			0800			0852				0952				1052				1152	
Woolston	☑	dep	<b>0557</b>	<b>0619</b>	0634		<b>0715</b>	0729			0803			0855				0955				1055				1155	
Sholing		dep			0636			0731			0806			0858				0958				1058				1158	
Netley	◆☑	dep			0640			0735			0810			0902				1002				1102				1202	
Hamble		dep			0642			0737			0812			0904				1004				1104				1204	
Bursledon	☑	dep			0645			0740			0815			0907				1007				1107				1207	
Swanwick	☑	dep	<b>0606</b>	<b>0627</b>	0649		<b>0724</b>	0744	<b>0751</b>		0820	0828	0850	0911				1011			1032	1050	1111		1133	1150	1211
<b>Fareham</b>	☑	arr	<b>0612</b>	<b>0633</b>	0657	0714	<b>0730</b>	0752	<b>0758</b>	0805	0828	0834	0856	0917	0927	0936	0956	1017	1027	1038	1056	1117	1127	1139	1156	1217	1227
<b>Fareham</b>	§☑	dep	<b>0613</b>	<b>0634</b>	0658	0715	<b>0731</b>	0753	<b>0758</b>	0806	0829	0835	0857	0918	0927	0937	0956	1018	1027	1039	1057	1118	1127	1140	1157	1218	1227
Portchester	§	arr	<b>0618</b>	<b>0639</b>	0703	0725 <sup>b</sup>	<b>0736</b>	0758			0834	0840		0923				1023			1044	1123			1145	1223	
Cosham	§☑	arr	<b>0622</b>	<b>0644</b>	0707	0723	<b>0740</b>	0802	<b>0806</b>	0814	0838	0844	0905	0928	0935	0946	1004	1028	1035	1048	1105	1128	1135	1149	1205	1228	1235
<b>Havant</b>	☑	arr	<b>0637</b>	<b>0653</b>	0730 <sup>c</sup>		<b>0746</b>		<b>0813</b>	0840 <sup>c</sup>		0850	0911					1055	1111					1155	1211		
Hilsea	§	arr	0633 <sup>b</sup>	0705 <sup>b</sup>	<b>0713</b>	0735 <sup>b</sup>	0803 <sup>b</sup>	<b>0809</b>			0845	0905 <sup>b</sup>		<b>0933</b>		1003 <sup>b</sup>		<b>1033</b>			1103 <sup>b</sup>		<b>1133</b>		1203 <sup>b</sup>	<b>1233</b>	
Fratton	§☑	arr	0638 <sup>b</sup>	0709 <sup>b</sup>	<b>0717</b>	<b>0734</b>	0807 <sup>b</sup>	<b>0813</b>			0821	0849	0909 <sup>b</sup>	<b>0937</b>	<b>0942</b>	1007 <sup>b</sup>		<b>1037</b>	<b>1042</b>		1107 <sup>b</sup>		<b>1137</b>	<b>1142</b>	1207 <sup>b</sup>	<b>1237</b>	<b>1242</b>
<b>Portsmouth &amp; Southsea</b>	■§	arr	0644 <sup>b</sup>	0712 <sup>b</sup>	<b>0722</b>	<b>0738</b>	0811 <sup>b</sup>	<b>0819</b>			0824	0852	0913 <sup>b</sup>	<b>0942</b>	<b>0946</b>	1011 <sup>b</sup>		<b>1042</b>	<b>1046</b>		1111 <sup>b</sup>		<b>1142</b>	<b>1146</b>	1211 <sup>b</sup>	<b>1242</b>	<b>1246</b>
<b>Portsmouth Harbour</b>	†§☑	arr	0649 <sup>b</sup>	0717 <sup>b</sup>		<b>0745</b>	0816 <sup>b</sup>	<b>0824</b>			0830	0857	0918 <sup>b</sup>		<b>0954</b>	1018 <sup>b</sup>		<b>1054</b>			1118 <sup>b</sup>		<b>1154</b>	1218 <sup>b</sup>		<b>1254</b>	

**Notes**

- b Change at Fareham.  
c Change at Fratton.

★ Passengers travelling with cycles may not join or leave services shown in red. Please see Southern publications for details.

For timetable notes and symbols see page 22.

**Monday to Friday**
**Southampton Central to Swanwick, Fareham, Cosham and Portsmouth**

Train Operator	Notes		SN 1	SN 1	SW 1	GW	SN 1	SN 1	SW 1	GW	SN 1	SN 1 G	GW	SN 1 G	SW 1	GW	SN 1	SN 1	SW 1	GW	SN 1	SN 1	SW 1	GW	SN 1	SN 1	SW 1
<b>Southampton Central</b>	‡P	dep	1213	1233	1244	1305	1313	1333	1344	1405	1413	1426	1434		1444	1505	1513	1533	1544	1605	1612	1633	1644	1705	1713	1733	1744
St Denys	‡	dep			1249				1349						1449				1549				1649				1749
Bitterne	P	dep			1252				1352						1452				1552				1652				1752
Woolston	P	dep			1255				1355						1455				1555				1655				1755
Sholing		dep			1258				1358						1458				1558				1658				1758
Netley	◆P	dep			1302				1402						1502				1602				1702				1802
Hamble		dep			1304				1404						1504				1604				1704				1804
Bursledon	P	dep			1307				1407						1507				1607				1707				1807
Swanwick	P	dep	1233	1250	1311		1333	1350	1411		1433				1511		1533	1550	1611		1629	1650	1711		1733	1750	1811
<b>Fareham</b>	P	arr	1239	1256	1317	1327	1339	1356	1417	1427	1439	1459	1455	1459	1517	1527	1539	1556	1617	1627	1635	1656	1717	1727	1739	1756	1817
<b>Fareham</b>	§P	dep	1240	1256	1318	1327	1340	1356	1418	1427	1440	1500	1456	1500	1518	1527	1540	1557	1618	1627	1636	1657	1718	1727	1740	1756	1818
Portchester	§	arr	1245		1323		1345	1423	1423		1445	1500			1523		1545	1623	1641	1717b	1723				1745	1823	
Cosham	§P	arr	1249	1304	1328	1335	1349	1404	1428	1435	1449		1504		1528	1535	1549	1605	1628	1635	1645	1705	1728	1735	1749	1804	1828
<b>Havant</b>	P	arr	1255	1311			1355	1411			1455		1510	1514			1557	1611			1651	1711			1755	1811	
Hilsea	§	arr	1303b		1333		1403b		1433		1503b				1533		1603b		1633		1703b		1733		1804b	1833	
Fratton	§P	arr	1307b		1337	1342	1407b		1437	1442	1507b				1537	1542	1607b		1637	1642	1707b	1731b	1737	1742	1808b	1837	
<b>Portsmouth &amp; Southsea</b>	■§	arr	1311b		1342	1346	1411b		1442	1446	1511b				1542	1546	1611b		1640	1646	1711b	1735b	1742	1746	1812b	1841	
<b>Portsmouth Harbour</b>	†§	arr	1318b			1354	1418b			1454	1518b				1554	1618b			1644	1654	1718b	1740b		1754	1820b	1851b	

**Notes**

- G Runs via Eastleigh.  
 b Change at Fareham.

For timetable notes and symbols see page 22.

**Monday to Friday**
**Southampton Central to Swanwick, Fareham, Cosham and Portsmouth**

Train Operator	Notes		GW	SN I	SN I	SW I	GW	SN I	SN I	SW I	GW	SN I	SN I	SW I	GW	SN I	SN I	SW I	GW	SN I	GW	SN I	SW I	GW	SW I E		
<b>Southampton Central</b>	‡P	dep	1805	1811	1833	1844	1905	1912	1933	1944	2005	2011	2033	2044	2105	2113	2133	2144	2204	2213		2233	2244	2305	2359		
St Denys	‡	dep				1849				1949				2049				2149				2233	2249		0004		
Bitterne	P	dep				1852				1952				2052				2152				2233	2252				
Woolston	P	dep				1855				1955				2055				2155				2233	2255				
Sholing		dep				1858				1958				2058				2158				2233	2258				
Netley	◆P	dep				1902				2002				2102				2202				2233	2302				
Hamble		dep				1904				2004				2104				2204				2233	2304				
Bursledon	P	dep				1907				2007				2107				2207				2233	2307				
Swanwick	P	dep		1828	1850	1911		1929	1951	2011				2111		2133	2151	2211		2230	—	2250	2311				
<b>Fareham</b>	P	arr	1827	1834	1856	1917	1927	1935	1957	2017	2027	2034	2056	2117	2127	2139	2157	2217	2242	2236	2242	2256	2317	2327	0047w		
<b>Fareham</b>	§P	dep	1827	1835	1856	1918	1927	1936	1957	2018	2027	2035	2057	2118	2127	2140	2158	2218	2242	2237	2242	2257	2318	2327			
Portchester	§	arr		1840	1919b	1923		1941		2023				2123		2145	2203	2223	—	2242		2315b	2323	2354b	0053w		
Cosham	§P	arr	1835	1844	1904	1928	1934	1945	2005	2028				2128		2149	2207	2228		2246		2305	2328	2358b	0057w		
<b>Havant</b>	P	arr		1850	1911			1952	2012						2155	2213				2256		2311					
Hilsea	§	arr		1905b	1928b	1933		2002b		2033		2103b		2133		2203b		2233				2324b	2333	0003b			
Fratton	§P	arr	1848	1909b	1932b	1937	1942	2006b		2037	2042	2107b		2137	2141	2208b		2237			2256	2332b	2337	2344	0105w		
<b>Portsmouth &amp; Southsea</b>	■§	arr	1852	1912b	1936b	1942	1946	2011b		2042	2046	2111b		2142	2145	2211b		2242			2259	2336b	2340	2348	0108w		
<b>Portsmouth Harbour</b>	†§	arr	1858	1920b	1943b		1954	2020b		2054	2116b			2152	2216b		2259c				2304	2340b		2354	0112w		

**Notes**

- E** Engineering work may affect this service - check before travelling.
- b** Change at Fareham.
- c** Change at Fratton.
- w** Change at Eastleigh.

For timetable notes and symbols see page 22.

**Saturday**
**Southampton Central to Swanwick, Fareham, Cosham and Portsmouth**

Train Operator		Notes	SW	SN	SN	SW	GW	SN	SN	SW	GW	SN	SN	SW	GW	SN	SN	SW	GW	SN	SN	SW	GW	SN	SN	SW	GW
			1	1	1	1		1	1	1		1	1	1		1	1	1		1	1	1		1	1	1	
<b>Southampton Central</b>	‡P	dep	0544	0613	0633	0644	0705	0713	0733	0744	0804	0813	0833	0844	0903	0913	0933	0944	1004	1013	1033	1044	1103	1113	1133	1144	1204
St Denys	‡	dep	0549			0649				0749				0849				0949				1049				1149	
Bitterne	P	dep	0552			0652				0752				0852				0952				1052				1152	
Woolston	P	dep	0555			0655				0755				0855				0955				1055				1155	
Sholing		dep	0558			0658				0758				0858				0958				1058				1158	
Netley	◆P	dep	0602			0702				0802				0902				1002				1102				1202	
Hamble		dep	0604			0704				0804				0904				1004				1104				1204	
Bursledon	P	dep	0607			0707				0807				0907				1007				1107				1207	
Swanwick	P	dep	0611	0633	0650	0711		0733	0750	0811		0833	0850	0911		0933	0950	1011		1033	1050	1111		1133	1150	1211	
<b>Fareham</b>	P	arr	0617	0639	0656	0717	0727	0739	0756	0817	0827	0839	0856	0917	0927	0939	0956	1017	1027	1039	1056	1117	1127	1139	1156	1217	1227
<b>Fareham</b>	\$P	dep	0618	0640	0656	0718	0727	0740	0756	0818	0827	0840	0856	0918	0927	0940	0956	1018	1027	1040	1056	1118	1127	1140	1156	1218	1227
Portchester	\$	arr	0623	0645		0723		0745		0823		0845		0923		0945		1023		1045		1123		1145		1223	
Cosham	\$P	arr	0628	0649	0704	0728	0735	0749	0804	0828	0835	0849	0904	0928	0935	0949	1004	1028	1035	1049	1104	1128	1135	1149	1204	1228	1235
<b>Havant</b>	P	arr		0655	0711			0755	0811			0855	0911			0955	1011			1055	1111			1155	1211		
Hilsea	\$	arr	0633	0703b		0733		0803b		0833		0904b		0933		1003b		1033		1103b		1133		1203b		1233	
Fratton	\$P	arr	0637	0707b		0737	0742	0807b		0837	0842	0908b		0937	0942	1007b		1037	1042	1107b		1137	1142	1207b		1237	1242
<b>Portsmouth &amp; Southsea</b>	■\$	arr	0642	0711b		0742	0746	0811b		0842	0846	0912b		0942	0946	1011b		1042	1046	1111b		1142	1146	1211b		1242	1246
<b>Portsmouth Harbour</b>	†\$	arr	0702c	0716b			0752	0818b			0852	0918b			0952	1018b			1052	1118b		1152	1218b			1251	

**Notes**

- b Change at Fareham.
- c Change at Fratton.

For timetable notes and symbols see page 22.



# Saturday

## Southampton Central to Swanwick, Fareham, Cosham and Portsmouth

Train Operator	Notes		SN I	SN I	SW I	GW	SN I	SN I	SW I	GW	SN I	SN I G	GW	SN I G	SW I	GW	SN I	SN I	SW I	GW	SN I	SN I	SW I	GW	SN I	SN I	SW I
<b>Southampton Central</b>	‡P	dep	1213	1233	1244	1303	1313	1333	1344	1404	1413	1426	1434		1444	1503	1513	1533	1544	1604	1613	1633	1644	1703	1713	1733	1744
St Denys	‡	dep			1249				1349						1449				1549				1649				1749
Bitterne	P	dep			1252				1352						1452				1552				1652				1752
Woolston	P	dep			1255				1355						1455				1555				1655				1755
Sholing		dep			1258				1358						1458				1558				1658				1758
Netley	◆P	dep			1302				1402						1502				1602				1702				1802
Hamble		dep			1304				1404						1504				1604				1704				1804
Bursledon	P	dep			1307				1407						1507				1607				1707				1807
Swanwick	P	dep	1233	1250	1311		1333	1350	1411		1433				1511		1533	1550	1611		1633	1650	1711		1733	1750	1811
<b>Fareham</b>	P	arr	1239	1256	1317	1327	1339	1356	1417	1427	1439	1459	1454	1459	1517	1527	1539	1556	1617	1627	1639	1656	1717	1726	1739	1756	1817
<b>Fareham</b>	§P	dep	1240	1256	1318	1327	1340	1356	1418	1427	1440	1500	1455	1500	1518	1527	1540	1556	1618	1627	1640	1656	1718	1726	1740	1756	1818
Portchester	§	arr	1245		1323				1345		1423				1523		1545		1623		1645		1723		1745		1823
Cosham	§P	arr	1249	1304	1328	1335	1349	1404	1428	1435	1449		1503		1528	1535	1549	1604	1628	1635	1649	1704	1728	1734	1749	1804	1828
<b>Havant</b>	P	arr	1255	1311			1355	1411			1455		1510	1514			1555	1611			1655	1711			1755	1811	
Hilsea	§	arr	1303b		1333				1403b		1433				1533		1603b		1633		1703b		1733		1803b		1833
Fratton	§P	arr	1307b		1337	1342			1407b	1437	1442	1507b			1537	1542	1607b		1637	1642	1707b		1737	1741	1807b		1837
<b>Portsmouth &amp; Southsea</b>	■§	arr	1311b		1342	1346			1411b	1442	1446	1511b			1542	1546	1611b		1640	1646	1711b		1742	1745	1811b		1842
<b>Portsmouth Harbour</b>	†§	arr	1318b			1351			1418b		1451	1518b			1551	1618b		1644	1651	1718b		1750		1818b			

### Notes

- G Runs via Eastleigh.
- b Change at Fareham.

For timetable notes and symbols see page 22.

# Saturday

## Southampton Central to Swanwick, Fareham, Cosham and Portsmouth

Train Operator	Notes		GW	SN f	SN f	SW f	GW	SN f	SN f	SW f	GW	SN f	SN f	SW f	GW	SN f	SN f	SW f	GW	SN f	SN f	SW f	GW	SW f E			
<b>Southampton Central</b>	‡P	dep	1804	1811	1833	1844	1903	1909	1933	1944	2004	2011	2033	2044	2103	2113	2133	2144	2204	2213	2233	2244	2304	2359			
St Denys	‡	dep				1849				1949				2049				2149				2249		0004			
Bitterne	P	dep				1852				1952				2052				2152				2252					
Woolston	P	dep				1855				1955				2055				2155				2255					
Sholing		dep				1858				1958				2058				2158				2258					
Netley	◆P	dep				1902				2002				2102				2202				2302					
Hamble		dep				1904				2004				2104				2204				2304					
Bursledon	P	dep				1907				2007				2107				2207				2307					
Swanwick	P	dep		1828	1850	1911		1928	1950	2011				2111		2133	2150	2211		2231	2250	2311					
<b>Fareham</b>	P	arr	1827	1834	1856	1917	1927	1934	1956	2017	2027	2034	2056	2117	2127	2139	2156	2217	2226	2238	2256	2317	2327	0047w			
<b>Fareham</b>	\$P	dep	1827	1835	1856	1918	1927	1935	1956	2018	2027	2035	2056	2118	2127	2140	2157	2218	2227	2239	2300	2318	2327				
Portchester	\$	arr		1840		1923		1940		2023				2123		2145	2202	2223		2244		2323	2353b	0053w			
Cosham	\$P	arr	1835	1844	1904	1928	1935	1944	2004	2028				2128		2149	2206	2228		2248	2308	2328	2358b	0057w			
<b>Havant</b>	P	arr		1850	1911			1951	2011			2050	2111			2155	2212			2254	2314						
Hilsea	\$	arr		1903b		1933		2003b		2037		2103b		2133		2203b		2233		2303b		2333	0003b				
Fratton	\$P	arr	1842	1907b		1937	1942	2007b		2041	2042	2107b		2137	2142	2207b		2237	2242	2307b		2337	2341	0105w			
<b>Portsmouth &amp; Southsea</b>	■\$	arr	1846	1911b		1942	1946	2011b		2044	2046	2111b		2141	2146	2211b		2240	2246	2311b		2340	2345	0108w			
<b>Portsmouth Harbour</b>	†\$	arr	1852	1918b		1952	2018b			2052	2118b			2152	2218b		2247	2252	2318b		2352	0112w					

### Notes

- E Engineering work may affect this service - check before travelling.
- b Change at Fareham.
- w Change at Eastleigh.

For timetable notes and symbols see page 22.

# Sunday

## Southampton Central to Swanwick, Fareham, Cosham and Portsmouth

Train Operator	Notes		SW 1	SN 1	SW 1	SN 1 G	GW	SN 1 G	SW 1	SN 1	SW 1	SN 1	SW 1	GW	SN 1	SW 1	GW	SN 1	SW 1	GW	SN 1	SW 1	GW	SN 1	SW 1	GW	SN 1
<b>Southampton Central</b>	‡P	dep	0635	0729	0735	0827	0831		0835	0929	0935	1029	1035	1104	1128	1135	1204	1229	1235	1308	1329	1335	1404	1429	1435	1522	1529
St Denys	‡	dep	0641		0741				0841		0941		1041		1141				1241			1341			1441		
Bitterne	P	dep	0643		0743				0843		0943		1043		1143				1243			1343			1443		
Woolston	P	dep	0647		0747				0847		0947		1047		1147				1247			1347			1447		
Sholing		dep	0649		0749				0849		0949		1049		1149				1249			1349			1449		
Netley	◆P	dep	0653		0753				0853		0953		1053		1153				1253			1353			1453		
Hamble		dep	0655		0755				0855		0955		1055		1155				1255			1355			1455		
Bursledon	P	dep	0658		0758				0858		0958		1058		1158				1258			1358			1458		
Swanwick	P	dep	0702	0746	0802			—	0902	0946	1002	1046	1102		1146	1202		1246	1302		1346	1402		1446	1502		1546
<b>Fareham</b>	P	arr	0709	0752	0809	0902	0851	0902	0909	0952	1009	1052	1109	1126	1152	1209	1226	1252	1309	1333	1352	1409	1426	1452	1509	1550	1557
<b>Fareham</b>	§P	dep	0710	0753	0810	0902	0852	0902	0910	0953	1010	1053	1110	1126	1153	1210	1226	1253	1310	1334	1353	1410	1426	1453	1510	1551	1558
Portchester	§	arr	0715		0815	—			0915		1015		1115	1149b		1215	1249b		1315	1349b		1415	1449b		1515		
Cosham	§P	arr	0719	0801	0819		0900	0910	0919	1001	1019	1101	1119	1134	1201	1219	1234	1301	1319	1341	1401	1419	1434	1501	1519	1600	1606
<b>Havant</b>	P	arr	0749c	0810	0849c		0911	0917	0949c	1010	1049c	1110	1149c	1159c	1210	1249c	1259c	1310	1349c	1403	1410	1449c	1459c	1510	1549c	1611	1615
Hilsea	§	arr	0726		0826				0926		1026		1126	1200b		1226	1300b		1326	1400b		1426	1500b		1526		
Fratton	§P	arr	0730		0830				0930		1030		1130	1141		1230	1241		1330	1404b		1430	1441		1530		
<b>Portsmouth &amp; Southsea</b>	■§	arr	0733		0833				0933		1033		1133	1145		1233	1245		1333	1408b		1433	1445		1533		
<b>Portsmouth Harbour</b>	†§	arr	0813c		0857c				1004c		1058c		1152			1252		1358c	1413b		1455			1558c			

### Notes

- G Runs via Eastleigh.
- b Change at Fareham.
- c Change at Fratton.

For timetable notes and symbols see page 22.

**Sunday**
**Southampton Central to Swanwick, Fareham, Cosham and Portsmouth**

Train Operator		Notes	SW	GW	SN	SW	GW	SN	SW	GW	SN	SW	GW	GW	SN	SW	GW	SN	GW	SN	SW	GW	SN	SW			
			1		1	1		1	1		1	1			1	1		1	1	1	1		1	1			
<b>Southampton Central</b>	‡P	dep	1535	1604	1629	1635	1704	1729	1735	1804	1829	1835	1904	1927	1930	1935	2004	2029	2031		2035	2101	2130	2135	2204	2215	2235
St Denys	‡	dep	1541			1641			1741	1804	1829	1841	1904	1927	1930	1941					2041	2101	2130	2141	2204	2215	2241
Bitterne	P	dep	1543			1643			1743	1804	1829	1843	1904	1927	1930	1943					2043	2101	2130	2143	2204	2215	2243
Woolston	P	dep	1547			1647			1747	1804	1829	1847	1904	1927	1930	1947					2047	2101	2130	2147	2204	2215	2247
Sholing		dep	1549			1649			1749	1804	1829	1849	1904	1927	1930	1949					2049	2101	2130	2149	2204	2215	2249
Netley	◆P	dep	1553			1653			1753	1804	1829	1853	1904	1927	1930	1953					2053	2101	2130	2153	2204	2215	2253
Hamble		dep	1555			1655			1755	1804	1829	1855	1904	1927	1930	1955					2055	2101	2130	2155	2204	2215	2255
Bursledon	P	dep	1558			1658			1758	1804	1829	1858	1904	1927	1930	1958					2058	2101	2130	2158	2204	2215	2258
Swanwick	P	dep	1602		1646	1702		1746	1802	1846	1902	1902	1926	1949	2002	2002				←	2102	2110	2147	2202	2232	2302	
<b>Fareham</b>	P	arr	1609	1626	1652	1709	1726	1752	1809	1826	1852	1909	1926	1949	2002	2009	2026	2102	2054	2102	2110	2123	2153	2209	2226	2238	2309
<b>Fareham</b>	§P	dep	1610	1626	1653	1710	1726	1753	1810	1826	1853	1910	1926	1950	2003	2010	2026	2102	2055	2102	2110	2124	2154	2210	2226	2239	2310
Portchester	§	arr	1615	1649b		1715	1749b		1815	1849b	1910	1915	1949b		2011	2015	2049b	←		2110	2115	2149b	2154	2215	2249b	2315	
Cosham	§P	arr	1619	1634	1701	1719	1734	1801	1819	1834	1901	1919	1934	1958	2011	2019	2054b			2110	2120	2154b	2202	2219	2247	2319	
<b>Havant</b>	P	arr	1649c	1659c	1710	1749c	1759c	1810	1849c	1859c	1910	1949c	1959c	2010	2018	2049c	2059c			2117	2149c	2159c	2210	2249c	2254		
Hilsea	§	arr	1626	1700b			1800b		1826	1900b		1926	2000b			2026	2100b			2126	2200b		2226	2240	2300b	2324	
Fratton	§P	arr	1630	1641		1726	1741		1830	1841		1930	1941			2030	2041		2109	2130	2137		2230	2243	2304b	2328	
Portsmouth & Southsea	■§	arr	1633	1645		1730	1745		1833	1845		1933	1945			2033	2045		2115	2133	2141		2233	2243	2308b	2332	
Portsmouth Harbour	†§	arr		1652		1733	1752			1852			1952			2052			2126		2148			2249	2313b		

**Notes**

- G Runs via Eastleigh.
- b Change at Fareham.
- c Change at Fratton.

For timetable notes and symbols see page 22.



## Timetable notes and symbols

arr Arrival time.

dep Departure time.

**GW** Operated by First Great Western. For details of seat and cycle reservation requirements and also catering facilities, please refer to First Great Western publications

**SN** Operated by Southern.

**SW** Operated by South West Trains.

↳ Continued in a later column.

← Continued from an earlier column.

**1** First Class accommodation also available.

⚓ Station for Southampton City Centre and the Docks, also buses for Red Funnel Ferries to Cowes, Isle of Wight and the Hythe Ferry.

◆ Station for the Royal Victoria Country Park and Netley Abbey.

† Station for Gunwharf Quays, the Spinnaker Tower and Historic Dockyard.

⚓ Interchange for Wightlink (Portsmouth - Ryde) high-speed catamaran and the Gosport ferry. Please allow at least 10 minutes for connections between trains and catamarans at Portsmouth Harbour.

P Car Park.

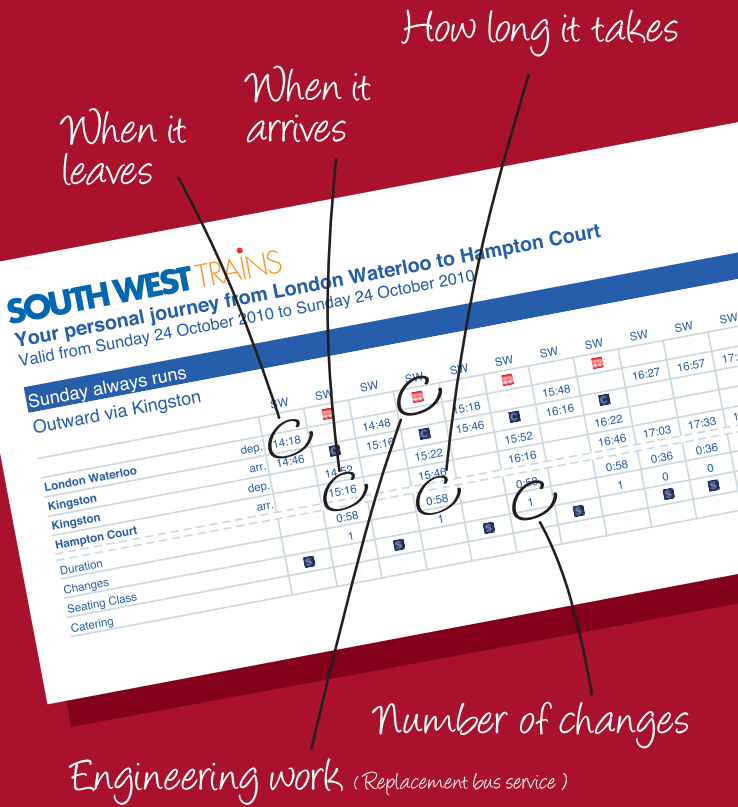
■ Station for Portsmouth City Centre, the Guildhall and bus service to Southsea Hoverport for Hovertravel services to Ryde, Isle of Wight.

‡ For details of additional services between Southampton and St Denys, please see pocket timetable 19.

§ For the full service between Fareham, Havant and Portsmouth, please see pocket timetable 18.

# Create your own timetable online...

...have only the information that you need!



Visit [southwesttrains.co.uk](http://southwesttrains.co.uk) and print your timetable with only the trains, stations and times you need.

## Buying a ticket

**0845 6000 650\***

Our UK-based Customer Service Centre is open from 6am to 10pm for ticket sales by credit or debit card.

## Customer Service Centre

**0845 6000 650\***

Open 6am to 10pm for:

- comments and suggestions
- assisted travel.

## southwesttrains.co.uk

- buying tickets online
- live train information
- train times
- ideas for days out.



## National Rail Enquiries



Call National Rail Enquiries on:

**08457 48 49 50**

Train times, fares & rail information



Call TrainTracker™ on:

**0871 200 49 50**

Up to the minute times for today's trains



Text station name to TrainTracker™ Text:

**8 49 50**

Live departure & arrival times direct to your mobile

Calls to TrainTracker cost 10p a minute from a BT fixed phone. Charges from other operators may vary. TrainTracker is for direct trains only. TrainTracker texts cost 25p for each successful response (plus usual text costs).

\* Calls charged at local rate and may be recorded.

South West Trains accepts no liability for any inaccuracy in the information contained in this timetable which is subject to alteration. Please check before you travel.

Stagecoach South Western Trains Limited. Registered in England and Wales 5599788.  
Registered office: Friars Bridge Court, 41-45 Blackfriars Road, London SE1 8NZ.  
A part of the Stagecoach Group plc.



**Please recycle**

**SOUTH WEST TRAINS**