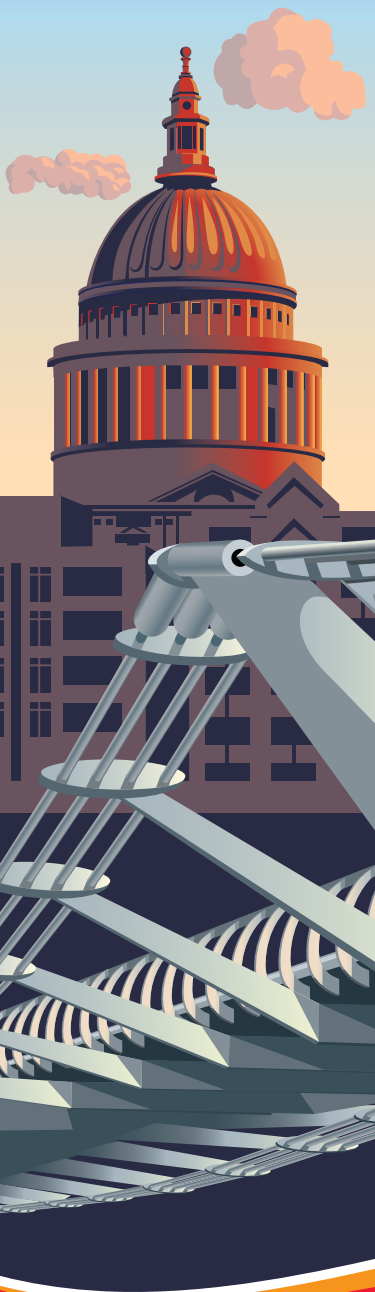


2a



Reading and Ascot to London Waterloo

TRAIN TIMES

5 October to
13 December 2014

- **London Waterloo**
- Richmond
- Twickenham
- **Feltham**
(for Heathrow Airport)
- Longcross
- Sunningdale
- **Ascot**
- Martins Heron
- Bracknell
- Wokingham
- Winnersh
- Winnersh Triangle
- Earley
- **Reading**

MONDAY TO FRIDAY

Reading and Ascot to London Waterloo

	Operator Notes	GW	GW	SW ★	GW	GW	SW ★	GW	SW H ★	SW ★	GW	SW H ★	SW ★	SW ★	GW	SW H ★	SW ★	GW	SW ★	GW	GW	SW	GW	SW	SW	GW	SW	SW	GW
Reading	d	0434	0524	0539	0554	0606	0609	0634		0639	0704		0709	0721	0734		0739	0804	0809	0820	0834	0839	0904	0909	0922	0934	0939	0953	1004
Earley	d			0544		0606	0614			0644			0714				0744		0814		0844		0914	0927		0944	0958		
Winnersh Triangle	d			0546			0616			0646			0716				0746		0816		0846		0916	0929		0946	1000		
Winnersh	d			0548			0618			0648			0718				0748		0818		0848		0918	0931		0948	1002		
Wokingham	d	0443a	0533a	0553	0603a	0615a	0623	0643a		0653	0712a		0723	0730	0742a		0753	0812a	0823	0828a	0842a	0853	0912a	0923	0936	0942a	0953	1007	1012a
Bracknell	d			0559			0629			0659			0729	0736			0759		0829		0859		0929	0943		0959	1013		
Martins Heron	d			0602			0632			0702			0732	0739			0802		0832		0902		0932	0946		1002	1016		
Ascot	d			0607			0637		0656	0707		0726	0737	0744		0756		0807		0837		0907		0937	0952		1007	1022	
Sunningdale	d			0610			0640		0659	0710		0729	0740	0747		0759		0810		0840		0910		0940	0955		1010	1025	
Longcross	d																0813		0843		0913								
Virginia Water	a			0619			0649		0708	0719		0738		0755		0808	0819		0849		0919		0949	1003		1019	1033		
Egham	a			0623			0653		0712	0723		0742	0750	0758		0812	0823		0853		0923		0952	1006		1023	1036		
Staines	a			0628			0658		0717	0728		0747	0755	0804		0817	0828		0858		0928		0958	1012		1028	1042		
Ashford	a			0636b			0711b		0721	0741b		0751	0811b		0821	0836b		0906b		0936b		1006b		1036b		1036b			
Feltham	a			0635			0705		0725	0735		0755	0802	0811		0825	0835		0905		0935		1005	1020		1035	1050		
Hounslow	a			0646c					0737c				0812c				0846c		0916b		0946c		1016c			1046c			
Twickenham	a			0640			0710		0733	0740		0803	0809	0817		0833	0840		0910		0940		1010	1026		1040	1057		
Richmond	a			0645			0715		0737	0745		0807	0813	0823		0837	0845		0915		0945		1015	1031		1045	1101		
Putney	a			0651			0721		0759e	0804e			0829e	0834e		0859e	0904e		0934e		1004e		1034e	1059e		1104e	1129e		
Clapham Junction	a			0656			0726		0746	0753		0816	0822	0832		0846	0853		0923		0953		1023	1041		1053	1111		
Vauxhall	a			0711h			0741h		0752	0811h		0822		0838		0852	0911h		0941h		1011h		1041h	1056h		1111h	1126h		
London Waterloo	a			0707			0737		0759	0806		0829	0838	0846		0900	0906		0934		1004		1034	1053		1104	1125		

Late night and weekend trains may be altered due to engineering works.
Please check at southwesttrains.co.uk before travelling.

MONDAY TO FRIDAY

Reading and Ascot to London Waterloo

	Operator Notes	GW ★	SW	SW A	GW ★	SW	SW B	GW ★	SW	GW ★	SW	SW	GW	SW	GW	SW	GW	SW	SW	GW	SW	SW	GW	SW	SW	GW FX		
Reading	d	1704	1709	1722	1734	1739	1753	1804	1809	1834	1839	1849	1904	1909	1934	1939	2004	2009	2034	2039	2109	2134	2139	2209	2234	2239	2312	2334
Earley	d		1714	1727		1744	1758		1814		1844	1854		1914		1944		2014		2044	2114		2144	2214		2244	2317	
Winnersh Triangle	d		1716	1729		1746	1800		1816		1846	1856		1916		1946		2016		2046	2116		2146	2216		2246	2319	
Winnersh	d		1718	1731		1748	1802		1818		1848	1858		1918		1948		2018		2048	2118		2148	2218		2248	2321	
Wokingham	d	1712a	1723	1736	1742a	1753	1807	1812a	1823	1842a	1853	1903	1912a	1923	1942a	1953	2012a	2023	2042a	2053	2123	2142a	2153	2223	2242a	2253	2326	2343a
Bracknell	d		1729	1742		1759	1813		1829		1859	1909		1929		1959		2029		2059	2129		2159	2229		2259	2332	
Martins Heron	d		1732	1745		1802	1816		1832		1902	1912		1932		2002		2032		2102	2132		2202	2232		2302	2335	
Ascot	d		1737	1755		1807	1825		1837		1907	1917		1937		2007		2037		2107	2137		2207	2237		2307	2340	
Sunningdale	d		1740	1758		1810	1828		1840		1910	1920		1940		2010		2040		2110	2140		2210	2240		2310	2343	
Longcross	d					1813			1843		1913			1943		2013		2043										
Virginia Water	a		1749	1803		1819	1833		1849		1919	1928		1949		2019		2049		2119	2149		2219	2249		2319	2349	
Egham	a		1753	1806		1823	1837		1853		1923	1931		1953		2023		2053		2123	2153		2223	2253		2323	2353	
Staines	a		1758	1812		1828	1842		1858		1928	1940		1958		2028		2058		2128	2158		2228	2258		2328	2358	
Ashford	a		1806b			1836b			1906b		1936b			2006b		2036b		2106b		2136b	2206b		2236b	2306b				
Feltham	a		1805	1820		1835	1850		1905		1935			2005		2035		2105		2135	2205		2235	2305		2335	0005	
Hounslow	a		1816c	1825		1846c	1855		1916c		1946c			2016c		2046c		2116c		2146c	2216c		2246c	2316c				
Twickenham	a		1810			1840			1910		1940			2010		2040		2110		2140	2210		2240	2310		2340	0010	
Richmond	a		1815			1845			1915		1945			2015		2045		2115		2145	2215		2245	2315		2345	0015	
Putney	a		1834e	1839		1904e	1909		1934e		2004e			2034e		2104e		2134e		2204e	2234e		2304e	2334e				
Clapham Junction	a		1823	1843		1853	1913		1923		1953			2023		2053		2123		2153	2223		2253	2323		2353	0023	
Vauxhall	a		1841h	1856g		1911h	1926g		1941h		2011h			2041h		2111h		2141h		2211h	2241h		2311h	2341h		0011h		
London Waterloo	a		1834	1856		1904	1928		1934		2004			2034		2104		2134		2204	2234		2304	2334		0004	0038	

Late night and weekend trains may be altered due to engineering works.
Please check at southwesttrains.co.uk before travelling.

SATURDAY

Reading and Ascot to London Waterloo

Operator Notes		GW	GW	SW	GW	SW	GW	SW	GW	SW	GW	SW	GW	SW	GW	SW	and at the same minutes past each hour until	GW	SW	GW	SW	GW	SW	GW	SW	GW	SW	GW
Reading	d	0434	0534	0539	0604	0609	0634	0639	0704	0709	0734	0739	0804	0809	0834	0839		1404	1409	1434	1439	1504	1509	1534	1539	1604	1609	1634
Earley	d			0544		0614		0644		0714		0744		0814		0844		1414	1414	1444	1444	1514	1514	1544	1544	1614	1614	
Winnersh Triangle	d			0546		0616		0646		0716		0746		0816		0846		1416	1416	1446	1446	1516	1516	1546	1546	1616	1616	
Winnersh	d			0548		0618		0648		0718		0748		0818		0848		1418	1418	1448	1448	1518	1518	1548	1548	1618	1618	
Wokingham	d	0443a	0543a	0553	0613a	0623	0643a	0653	0712a	0723	0742a	0753	0812a	0823	0842a	0853		1412a	1423	1442a	1453	1512a	1523	1542a	1553	1612a	1623	1642a
Bracknell	d			0559		0629		0659		0729		0759		0829		0859		1429	1429	1459	1459	1529	1529	1559	1559	1629	1629	
Martins Heron	d			0602		0632		0702		0732		0802		0832		0902		1432	1432	1502	1502	1532	1532	1602	1602	1632	1632	
Ascot	d			0607		0637		0707		0737		0807		0837		0907		1437	1437	1507	1507	1537	1537	1607	1607	1637	1637	
Sunningdale	d			0610		0640		0710		0740		0810		0840		0910		1440	1440	1510	1510	1540	1540	1610	1610	1640	1640	
Longcross	d																											
Virginia Water	a			0619		0649		0719		0749		0819		0849		0919			1449		1519		1549		1619		1649	
Egham	a			0623		0653		0723		0753		0823		0853		0923			1453		1523		1553		1623		1653	
Staines	a			0628		0658		0728		0758		0828		0858		0928			1458		1528		1558		1628		1658	
Ashford	a			0636b		0706b		0736b		0806b		0836b		0906b		0936b			1506b		1536b		1606b		1636b		1706b	
Feltham	a			0635		0705		0735		0805		0835		0905		0935			1505		1535		1605		1635		1705	
Hounslow	a			0646c		0716c		0746c		0816c		0846c		0916c		0946c			1516c		1546c		1616c		1646c		1716c	
Twickenham	a			0640		0710		0740		0810		0840		0910		0940			1510		1540		1610		1640		1710	
Richmond	a			0645		0715		0745		0815		0845		0915		0945			1515		1545		1615		1645		1715	
Putney	a			0704e		0734e		0804e		0834e		0904e		0934e		1004e			1534e		1604e		1634e		1704e		1734e	
Clapham Junction	a			0653		0723		0753		0823		0853		0923		0953			1523		1553		1623		1653		1723	
Vauxhall	a			0711h		0741h		0811h		0841h		0911h		0941h		1011h			1541h		1611h		1641h		1711h		1741h	
London Waterloo	a			0704		0734		0804		0834		0904		0934		1004			1534		1604		1634		1704		1734	

Late night and weekend trains may be altered due to engineering works. Please check at southwesttrains.co.uk before travelling.

SATURDAY

Reading and Ascot to London Waterloo

	<i>Operator Notes</i>	SW	GW	SW	GW	SW	GW	SW	GW	SW	GW	SW	GW	SW	GW	SW	GW	SW	SW	GW	SW	SW							
Reading	d	1639	1704	1709	1734	1739	1804	1809	1834	1839	1904	1909	1934	1939	2004	2009	2034	2039	2109	2134	2139	2209	2234	2239	2312				
Earley	d	1644		1714		1744		1814		1844		1914		1944		2014		2044	2114		2144	2214		2244	2317				
Winnersh Triangle	d	1646		1716		1746		1816		1846		1916		1946		2016		2046	2116		2146	2216		2246	2319				
Winnersh	d	1648		1718		1748		1818		1848		1918		1948		2018		2048	2118		2148	2218		2248	2321				
Wokingham	d	1653	1712a	1723	1742a	1753	1812a	1823	1842a	1853	1912a	1923	1942a	1953	2012a	2023	2042a	2053	2123	2142a	2153	2223	2242a	2253	2326				
Bracknell	d	1659		1729		1759		1829		1859		1929		1959		2029		2059	2129		2159	2229		2259	2332				
Martins Heron	d	1702		1732		1802		1832		1902		1932		2002		2032		2102	2132		2202	2232		2302	2335				
Ascot	d	1707		1737		1807		1837		1907		1937		2007		2037		2107	2137		2207	2237		2307	2340				
Sunningdale	d	1710		1740		1810		1840		1910		1940		2010		2040		2110	2140		2210	2240		2310	2343				
Longcross	d																												
Virginia Water	a	1719		1749		1819		1849		1919		1949		2019		2049		2119	2149		2219	2249		2319	2349				
Egham	a	1723		1753		1823		1853		1923		1953		2023		2053		2123	2153		2223	2253		2323	2353				
Staines	a	1728		1758		1828		1858		1928		1958		2028		2058		2128	2158		2228	2258		2328	2358				
Ashford	a	1736b		1806b		1836b		1906b		1936b		2006b		2036b		2106b		2136b	2206b		2236b	2306b							
Feltham	a	1735		1805		1835		1905		1935		2005		2035		2105		2135	2205		2235	2305		2335	0005				
Hounslow	a	1746c		1816c		1846c		1916c		1946c		2016c		2046c		2116c		2146c	2216c		2246c	2316c							
Twickenham	a	1740		1810		1840		1910		1940		2010		2040		2110		2140	2210		2240	2310		2340	0010				
Richmond	a	1745		1815		1845		1915		1945		2015		2045		2115		2145	2215		2245	2315		2345	0015				
Putney	a	1804e		1834e		1904e		1934e		2004e		2034e		2104e		2134e		2204e	2234e		2304e	2334e							
Clapham Junction	a	1753		1823		1853		1923		1953		2023		2053		2123		2153	2223		2253	2323		2353	0024				
Vauxhall	a	1811h		1841h		1911h		1941h		2011h		2041h		2111h		2141h		2211h	2241h		2311h	2341h		0011h					
London Waterloo	a	1804		1834		1904		1934		2004		2034		2104		2134		2204	2234		2304	2334		0002	0037				

Late night and weekend trains may be altered due to engineering works.
Please check at southwesttrains.co.uk before travelling.

SUNDAY

Reading and Ascot to London Waterloo

	Operator	Notes	GW	GW	SW	GW	SW	SW	GW	SW	SW	GW	SW	SW	GW	SW	SW	GW	SW	SW	GW	SW	SW	GW	SW	SW	GW			
Reading	d		0603	0703	0751	0818	0821	0851	0918	0921	0951	1018	1021	1051	1118	1121	1151	1218	1221	1251	1318	1321	1351	1418	1421	1451	1518	1521	1551	1618
Earley	d				0756		0826	0856		0926	0956		1026	1056		1126	1156		1226	1256		1326	1356		1426	1456		1526	1556	
Winnersh Triangle	d				0758		0828	0858		0928	0958		1028	1058		1128	1158		1228	1258		1328	1358		1428	1458		1528	1558	
Winnersh	d				0800		0830	0900		0930	1000		1030	1100		1130	1200		1230	1300		1330	1400		1430	1500		1530	1600	
Wokingham	d		0611a	0711a	0805	0826a	0835	0905	0925a	0935	1005	1026a	1035	1105	1125a	1135	1205	1226a	1235	1305	1325a	1335	1405	1426a	1435	1505	1525a	1535	1605	1626a
Bracknell	d				0811		0841	0911		0941	1011		1041	1111		1141	1211		1241	1311		1341	1411		1441	1511		1541	1611	
Martins Heron	d				0814		0844	0914		0944	1014		1044	1114		1144	1214		1244	1314		1344	1414		1444	1514		1544	1614	
Ascot	d				0819		0849	0919		0949	1019		1049	1119		1149	1219		1249	1319		1349	1419		1449	1519		1549	1619	
Sunningdale	d				0822		0852	0922		0952	1022		1052	1122		1152	1222		1252	1322		1352	1422		1452	1522		1552	1622	
Longcross	d																													
Virginia Water	a				0830		0900	0930		1000	1030		1100	1130		1200	1230		1300	1330		1400	1430		1500	1530		1600	1630	
Egham	a				0834		0904	0934		1004	1034		1104	1134		1204	1234		1304	1334		1404	1434		1504	1534		1604	1634	
Staines	a				0839		0909	0939		1009	1039		1109	1139		1209	1239		1309	1339		1409	1439		1509	1539		1609	1639	
Ashford	a						0919b			1019b	1048b		1119b	1148b		1219b	1248b		1319b	1348b		1419b	1448b		1519b	1548b		1619b	1648b	
Feltham	a				0845		0915	0945		1015	1045		1115	1145		1215	1245		1315	1345		1415	1445		1515	1545		1615	1645	
Hounslow	a						0934c			1034c			1134c			1234c			1334c			1434c			1534c			1634c		
Twickenham	a				0851		0921	0951		1021	1051		1121	1151		1221	1251		1321	1351		1421	1451		1521	1551		1621	1651	
Richmond	a				0855		0925	0955		1025	1055		1125	1155		1225	1255		1325	1355		1425	1455		1525	1555		1625	1655	
Putney	a				0902		0932	1002		1032	1102		1132	1202		1232	1302		1332	1402		1432	1502		1532	1602		1632	1702	
Clapham Junction	a				0906		0936	1006		1036	1106		1136	1206		1236	1306		1336	1406		1436	1506		1536	1606		1636	1706	
Vauxhall	a				0912		0942	1012		1042	1112		1142	1212		1242	1312		1342	1412		1442	1512		1542	1612		1642	1712	
London Waterloo	a				0923		0953	1023		1053	1123		1153	1223		1253	1323		1353	1423		1453	1518		1548	1618		1648	1718	

Late night and weekend trains may be altered due to engineering works. Please check at southwesttrains.co.uk before travelling.

MONDAY TO FRIDAY

London Waterloo to Ascot and Reading

	Operator Notes	SW	SW	GW	SW	GW	SW	GW ★	SW	GW ★	GW ★	SW	SW S★	GW ★	SW ★	GW ★	SW ★	SW ★	GW	SW ★	SW ★	GW	SW	GW	SW	GW	SW	GW	SW
London Waterloo	d		0505		0550		0620		0650			0720	0728e		0750		0807	0820		0837	0850		0920		0950		1020		1050
Vauxhall	d		0509		0537e		0607e		0637e			0707e	0732e		0741h		0802e	0814h		0832e	0837e		0911h		0941h		1011h		1041h
Clapham Junction	d		0515		0558		0628		0658			0728	0745		0758		0816	0828		0845	0858		0928		0958		1028		1058
Putney	d		0521		0549e		0619e		0649e			0719e	0742e		0749e		0812e	0819e		0842e	0849e		0919e		0949e		1019e		1049e
Richmond	d		0531		0606		0636		0706			0736	0754		0806		0824	0836		0854	0906		0936		1006		1036		1106
Twickenham	d		0536		0610		0640		0710			0740	0758		0810		0828	0840		0858	0910		0940		1010		1040		1110
Hounslow	d						0631c		0701c			0731c			0801b			0831c			0901c		0931c		1001c		1031c		1101c
Feltham	d		0543		0616		0646		0716			0746	0804		0816		0834	0846		0904	0916		0946		1016		1046		1116
Ashford	d		0547		0604b		0640b		0710b			0740b	0808		0812b		0838	0842b		0908	0912b		0940b		1010b		1040b		1110b
Staines	d	0523	0553		0623		0653		0723			0753	0812		0823		0842	0853		0912	0923		0953		1023		1053		1123
Egham	d	0527	0557		0627		0657		0727			0757	0816		0827		0847	0857		0916	0927		0957		1027		1057		1127
Virginia Water	d	0531	0601		0631		0701		0731			0801			0831		0851	0901		0920	0931		1001		1031		1101		1131
Longcross	d				0635		0705		0735			0805			0835		0854												
Sunningdale	d	0537	0607		0637		0707		0737			0807			0837		0858	0907		0926	0937		1007		1037		1107		1137
Ascot	d	0543	0613		0643		0713		0743			0813	0826a		0843		0902	0913		0930	0943		1013		1043		1113		1143
Martins Heron	d	0547	0617		0647		0717		0747			0817			0847		0906	0917		0934	0947		1017		1047		1117		1147
Bracknell	d	0550	0620		0650		0720		0750			0820			0850		0910	0920		0938	0950		1020		1050		1120		1150
Wokingham	d	0557	0627	0650	0657	0717	0727	0741	0757	0802	0817	0827		0850	0857	0904	0917	0927	0941	0947	0957	1003	1027	1048	1057	1110	1127	1144	1157
Winnersh	d	0600	0630		0700		0730		0800		0821	0830			0900		0920	0930		1000		1030		1100		1130		1200	
Winnersh Triangle	d	0602	0632		0702		0732		0802			0832			0902		0922	0932		1002		1032		1102		1132		1202	
Earley	d	0607	0637		0707		0737		0807			0837			0907		0927	0937		1007		1037		1107		1137		1207	
Reading	a	0613	0643	0658	0713	0729	0743	0752	0813	0817	0828	0843		0900	0913	0917	0933	0943	0951	0958	1013	1017	1043	1059	1113	1119	1143	1154	1213

Late night and weekend trains may be altered due to engineering works. Please check at southwesttrains.co.uk before travelling.

MONDAY TO FRIDAY

London Waterloo to Ascot and Reading

	Operator Notes	GW	SW	GW	SW	GW	SW	GW	SW	GW	SW	GW	SW	GW	SW	GW	SW	GW	SW	GW	SW	SW	GW	SW	SW	SW	SW	GW	
London Waterloo	d		1120		1150		1220		1250		1320		1350		1420		1450		1520		1550		1605	1620		1635	1650	1705	
Vauxhall	d		1111h		1141h		1211h		1241h		1311h		1341h		1411h		1441h		1511h		1541h		1609	1611h		1639	1641h	1709	
Clapham Junction	d		1128		1158		1228		1258		1328		1358		1428		1458		1528		1558		1615	1628		1645	1658	1715	
Putney	d		1119e		1149e		1219e		1249e		1319e		1349e		1419e		1449e		1519e		1549e		1612e	1617e		1642e	1647e	1712e	
Richmond	d		1136		1206		1236		1306		1336		1406		1436		1506		1536		1606		1623	1636		1653	1706	1723	
Twickenham	d		1140		1210		1240		1310		1340		1410		1440		1510		1540		1610		1627	1640		1657	1710	1727	
Hounslow	d		1131c		1201c		1231c		1301c		1331c		1401c		1431c		1501c		1531c		1601c		1631c		1631c		1701c		
Feltham	d		1146		1216		1246		1316		1346		1416		1446		1516		1546		1616		1633	1646		1703	1716	1733	
Ashford	d		1140b		1210b		1240b		1310b		1340b		1410b		1440b		1510b		1540b		1610b		1637	1642b		1707	1712b	1737	
Staines	d		1153		1223		1253		1323		1353		1423		1453		1523		1553		1623		1641	1653		1711	1723	1741	
Egham	d		1157		1227		1257		1327		1357		1427		1457		1527		1557		1627		1646	1657		1716	1727	1746	
Virginia Water	d		1201		1231		1301		1331		1401		1431		1501		1531		1601		1631		1650	1701		1720	1731	1750	
Longcross	d																												
Sunningdale	d		1207		1237		1307		1337		1407		1437		1507		1537		1607		1637		1655	1707		1723			
Ascot	d		1213		1243		1313		1343		1413		1443		1513		1543		1613		1643		1700	1713		1731	1743	1800a	
Martins Heron	d		1217		1247		1317		1347		1417		1447		1517		1547		1617		1647		1704	1717		1735	1747		
Bracknell	d		1220		1250		1320		1350		1420		1450		1520		1550		1620		1650		1707	1720		1739	1750		
Wokingham	d	1210	1227	1244	1257	1310	1327	1344	1357	1410	1427	1444	1457	1510	1527	1543	1557	1610	1627	1648	1657	1710	1717	1727	1744	1747	1757		1815
Winnersh	d		1230		1300		1330		1400		1430		1500		1530		1600		1630		1700			1730			1800		
Winnersh Triangle	d		1232		1302		1332		1402		1432		1502		1532		1602		1632		1702			1732			1802		
Earley	d		1237		1307		1337		1407		1437		1507		1537		1607		1637		1707			1737			1807		
Reading	a	1219	1243	1254	1313	1319	1343	1354	1413	1419	1443	1454	1513	1519	1543	1554	1613	1624	1643	1700	1713	1719	1730	1745	1754	1801	1815		1824

Late night and weekend trains may be altered due to engineering works.
Please check at southwesttrains.co.uk before travelling.

MONDAY TO FRIDAY

London Waterloo to Ascot and Reading

	Operator Notes	SW ★	GW	SW ★	SW ★	SW ★	GW	GW	SW ★	SW ★	SW ★	GW	SW ★	GW	SW ★	GW	SW	GW	SW	GW	SW	GW	SW	SW	GW	SW	GW	SW	SW S		
London Waterloo	d	1720		1735	1750	1805			1820	1835	1850		1905		1920		1950		2020		2050		2120		2150	2220		2250		2320	2350
Vauxhall	d	1711h		1739	1741h	1809			1811h	1839	1842h		1909		1912h		1941h		2011h		2041h		2111h		2141h	2207e		2237e		2307e	2337e
Clapham Junction	d	1728		1745	1758	1815			1828	1845	1858		1915		1928		1958		2028		2058		2128		2158	2228		2258		2328	2358
Putney	d	1717e		1742e	1747e	1812e			1817e	1842e	1847e		1912e		1917e		1949e		2019e		2049e		2119e		2149e	2219e		2249e		2319e	2349e
Richmond	d	1736		1753	1806	1823			1836	1853	1906		1923		1936		2006		2036		2106		2136		2206	2236		2306		2336	0006
Twickenham	d	1740		1757	1810	1827			1840	1857	1910		1927		1940		2010		2040		2110		2140		2210	2240		2310		2340	0010
Hounslow	d	1731c			1801c				1831c		1901c				1931c		2001c		2031c		2101c		2131c		2201c	2231c		2301c		2331c	0001c
Feltham	d	1746		1803	1816	1833			1846	1903	1916		1933		1946		2016		2046		2116		2146		2216	2246		2316		2346	0016
Ashford	d	1742b		1807	1812b	1837			1842b	1907	1912b		1937		1942b		2010b		2040b		2110b		2140b		2210b	2240b		2310b		2340b	0010b
Staines	d	1753		1811	1823	1841			1853	1911	1923		1941		1953		2023		2053		2123		2153		2223	2253		2323		2353	0023
Egham	d	1757		1816	1827	1846			1857	1916	1927		1946		1957		2027		2057		2127		2157		2227	2257		2327		2357	0027
Virginia Water	d	1801		1820	1831	1850			1901	1920	1931		1950		2001		2031		2101		2131		2201		2231	2301		2331		0001	0031
Longcross	d				1835																										
Sunningdale	d	1807		1825	1837	1855			1907	1925	1937		1955		2007		2037		2107		2137		2207		2237	2307		2337		0008	0037
Ascot	d	1813		1830	1843	1900a			1913	1930	1943		2000		2013		2043		2113		2143		2213		2243	2313		2343		0013	0042
Martins Heron	d	1817		1834	1847				1917	1934	1947		2004		2017		2047		2117		2147		2217		2247	2317		2347		0017	0046
Bracknell	d	1820		1837	1850				1920	1937	1950		2007		2020		2050		2120		2150		2220		2250	2320		2350		0020	0049
Wokingham	d	1827	1839	1847	1857		1904	1915	1927	1947	1957	2011	2017	2022	2027	2043	2057	2110	2127	2150	2157	2210	2227	2248	2257	2327	2351	2357	0029	0032	0056
Winnersh	d	1830			1900				1930		2000				2030		2100		2130		2200		2230		2300	2330		2359		0036	
Winnersh Triangle	d	1832			1902				1932		2002				2032		2102		2132		2202		2232		2302	2332		0002		0038	
Earley	d	1837			1907				1937		2007				2037		2107		2137		2207		2237		2306	2337		0005		0040	
Reading	a	1845	1850	1900	1915		1917	1925	1945	2000	2015	2021	2028	2032	2043	2057	2113	2119	2143	2201	2213	2219	2243	2304	2313	2343	0001	0013	0043	0048	0107

Late night and weekend trains may be altered due to engineering works.
Please check at southwesttrains.co.uk before travelling.

SATURDAY

London Waterloo to Ascot and Reading

Operator	Notes	SW	SW	GW	SW	GW	SW	GW	SW	GW	SW	GW	SW	GW	SW	GW	SW	GW	SW	GW	SW	GW	SW	GW	SW	GW	SW	
London Waterloo	d		0505		0550		0620		0650		0720		0750		0820		0850											
Vauxhall	d		0509		0537e		0607e		0637e		0707e		0741h		0811h		0841h											
Clapham Junction	d		0515		0558		0628		0658		0728		0758		0828		0858											
Putney	d		0521		0549e		0619e		0649e		0719e		0749e		0819e		0849e											
Richmond	d		0531		0606		0636		0706		0736		0806		0836		0906											
Twickenham	d		0536		0610		0640		0710		0740		0810		0840		0910											
Hounslow	d								0701c		0731c		0801c		0831c		0901c											
Feltham	d		0543		0616		0646		0716		0746		0816		0846		0916											
Ashford	d		0547		0604b		0633b		0710b		0740b		0810b		0840b		0910b											
Staines	d	0523	0553		0623		0653		0723		0753		0823		0853		0923											
Egham	d	0527	0557		0627		0657		0727		0757		0827		0857		0927											
Virginia Water	d	0531	0601		0631		0701		0731		0801		0831		0901		0931											
Longcross	d																											
Sunningdale	d	0537	0607		0637		0707		0737		0807		0837		0907		0937											
Ascot	d	0543	0613		0643		0713		0743		0813		0843		0913		0943											
Martins Heron	d	0547	0617		0647		0717		0747		0817		0847		0917		0947											
Bracknell	d	0550	0620		0650		0720		0750		0820		0850		0920		0950											
Wokingham	d	0557	0627	0649	0657	0710	0727	0744	0757	0810	0827	0844	0857	0910	0927	0944	0957											
Winnersh	d	0600	0630		0700		0730		0800		0830		0900		0930		1000											
Winnersh Triangle	d	0602	0632		0702		0732		0802		0832		0902		0932		1002											
Earley	d	0607	0635		0707		0737		0807		0837		0907		0937		1007											
Reading	a	0613	0643	0701	0713	0719	0743	0754	0813	0819	0843	0854	0913	0919	0943	0954	1013											

and at the same minutes past each hour until

Late night and weekend trains may be altered due to engineering works. Please check at southwesttrains.co.uk before travelling.

SATURDAY

London Waterloo to Ascot and Reading

	Operator Notes	GW	SW	GW	SW	GW	SW	GW	SW	GW	SW	GW	SW	GW	SW	GW	SW	GW	SW	GW	SW	SW	GW	SW	GW	SW	SW S		
London Waterloo	d		1650		1720		1750		1820		1850		1920		1950		2020		2050		2120		2150	2220		2250		2320	2350
Vauxhall	d		1641h		1711h		1741h		1811h		1841h		1911h		1941h		2011h		2041h		2111h		2141h	2207e		2237e		2307e	2337e
Clapham Junction	d		1658		1728		1758		1828		1858		1928		1958		2028		2058		2128		2158	2228		2258		2328	2358
Putney	d		1649e		1719e		1749e		1819e		1849e		1919e		1949e		2019e		2049e		2119e		2149e	2219e		2249e		2319e	2349e
Richmond	d		1706		1736		1806		1836		1906		1936		2006		2036		2106		2136		2206	2236		2306		2336	0006
Twickenham	d		1710		1740		1810		1840		1910		1940		2010		2040		2110		2140		2210	2240		2310		2340	0010
Hounslow	d		1701c		1731c		1801c		1831c		1901c		1931c		2001c		2031c		2101c		2131c		2201c	2231c		2301c		2331c	0001c
Feltham	d		1716		1746		1816		1846		1916		1946		2016		2046		2116		2146		2216	2246		2316		2346	0016
Ashford	d		1710b		1740b		1810b		1840b		1910b		1940b		2010b		2040b		2110b		2140b		2210b	2240b		2310b		2340b	0010b
Staines	d		1723		1753		1823		1853		1923		1953		2023		2053		2123		2153		2223	2253		2323		2353	0023
Egham	d		1727		1757		1827		1857		1927		1957		2027		2057		2127		2157		2227	2257		2327		2357	0027
Virginia Water	d		1731		1801		1831		1901		1931		2001		2031		2101		2131		2201		2231	2301		2331		0001	0031
Longcross	d																												
Sunningdale	d		1737		1807		1837		1907		1937		2007		2037		2107		2137		2207		2237	2307		2337		0008	0037
Ascot	d		1743		1813		1843		1913		1943		2013		2043		2113		2143		2213		2243	2313		2343		0013	0042
Martins Heron	d		1747		1817		1847		1917		1947		2017		2047		2117		2147		2217		2247	2317		2347		0017	0046
Bracknell	d		1750		1820		1850		1920		1950		2020		2050		2120		2150		2220		2250	2320		2350		0020	0049
Wokingham	d	1744	1757	1810	1827	1844	1857	1910	1927	1944	1957	2010	2027	2044	2057	2110	2127	2144	2157	2210	2227	2249	2257	2327	2351	2357	0029	0032	0056
Winnersh	d		1800		1830		1900		1930		2000		2030		2100		2130		2200		2230		2300	2330		2359		0036	
Winnersh Triangle	d		1802		1832		1902		1932		2002		2032		2102		2132		2202		2232		2302	2332		0002		0038	
Earley	d		1807		1837		1907		1937		2007		2037		2107		2137		2207		2237		2307	2337		0005		0040	
Reading	a	1754	1813	1819	1843	1854	1913	1919	1943	1954	2013	2019	2043	2054	2113	2119	2143	2154	2213	2219	2243	2257	2313	2343	0001	0013	0037	0048	0107

Late night and weekend trains may be altered due to engineering works.
Please check at southwesttrains.co.uk before travelling.

SUNDAY

London Waterloo to Ascot and Reading

	<i>Operator</i>	<i>Notes</i>	GW	SW	GW	SW	SW	GW	SW	SW	GW	SW	SW	GW	SW	SW	GW	SW	SW	GW	SW	SW	GW	SW	SW	GW	SW										
London Waterloo	d		0709			0809			0839	0909			0939	1009			1039	1109			1139	1209			1239	1309			1339	1409			1439	1509			1539
Vauxhall	d		0713			0813			0843	0913			0943	1013			1043	1113			1143	1213			1243	1313			1343	1413			1443	1513			1543
Clapham Junction	d		0719			0819			0849	0919			0949	1019			1049	1119			1149	1219			1249	1319			1349	1419			1449	1519			1549
Putney	d		0723			0823			0853	0923			0953	1023			1053	1123			1153	1223			1253	1323			1353	1423			1453	1523			1553
Richmond	d		0729			0829			0859	0929			0959	1029			1059	1129			1159	1229			1259	1329			1359	1429			1459	1529			1559
Twickenham	d		0733			0833			0903	0933			1003	1033			1103	1133			1203	1233			1303	1333			1403	1433			1503	1533			1603
Hounslow	d					0826c				0926c				1026c				1126c				1226c				1326c				1426c				1526c			
Feltham	d		0739			0839			0909	0939			1009	1039			1109	1139			1209	1239			1309	1339			1409	1439			1509	1539			1609
Ashford	d		0726b			0836b				0936b			1000b	1036b			1100b	1136b			1200b	1236b			1300b	1336b			1400b	1436b			1500b	1536b			1600b
Staines	d		0745			0815	0845		0915	0945			1015	1045			1115	1145			1215	1245			1315	1345			1415	1445			1515	1545			1615
Egham	d		0750			0820	0850		0920	0950			1020	1050			1120	1150			1220	1250			1320	1350			1420	1450			1520	1550			1620
Virginia Water	d		0754			0824	0854		0924	0954			1024	1054			1124	1154			1224	1254			1324	1354			1424	1454			1524	1554			1624
Longcross	d																																				
Sunningdale	d		0759			0829	0859		0929	0959			1029	1059			1129	1159			1229	1259			1329	1359			1429	1459			1529	1559			1629
Ascot	d		0804			0834	0904		0934	1004			1034	1104			1134	1204			1234	1304			1334	1404			1434	1504			1534	1604			1634
Martins Heron	d		0808			0838	0908		0938	1008			1038	1108			1138	1208			1238	1308			1338	1408			1438	1508			1538	1608			1638
Bracknell	d		0811			0841	0911		0941	1011			1041	1111			1141	1211			1241	1311			1341	1411			1441	1511			1541	1611			1641
Wokingham	d	0717	0818	0826	0848	0918	0926	0948	1018	1026	1048	1119	1126	1148	1218	1226	1248	1318	1326	1348	1418	1426	1448	1518	1526	1548	1618	1626	1648	1656	1664	1672	1680	1688	1696	1704	
Winnersh	d		0821			0851	0921		0951	1021			1051	1122			1151	1221			1251	1321			1351	1421			1451	1521			1551	1621			1651
Winnersh Triangle	d		0823			0853	0923		0953	1023			1053	1124			1153	1223			1253	1323			1353	1423			1453	1523			1553	1623			1653
Earley	d		0826			0856	0926		0956	1026			1056	1127			1156	1226			1256	1326			1356	1426			1456	1526			1556	1626			1656
Reading	a	0726	0834	0835	0904	0934	0937	1004	1034	1035	1104	1134	1135	1204	1234	1235	1304	1334	1335	1404	1434	1435	1504	1534	1535	1604	1634	1635	1704								

Late night and weekend trains may be altered due to engineering works. Please check at southwesttrains.co.uk before travelling.

SUNDAY

London Waterloo to Ascot and Reading

	<i>Operator</i>	<i>Notes</i>	SW	GW	SW	SW	GW	SW	SW	GW	SW	SW	GW	SW	SW	GW	SW	SW	GW	SW	SW	GW	SW							
London Waterloo	d		1609		1639	1709		1739	1809		1839	1909		1939	2009		2039	2109		2139	2209		2239	2309		2339				
Vauxhall	d		1613		1643	1713		1743	1813		1843	1913		1943	2013		2043	2113		2143	2213		2243	2313		2343				
Clapham Junction	d		1619		1649	1719		1749	1819		1849	1919		1949	2019		2049	2119		2149	2219		2249	2319		2349				
Putney	d		1623		1653	1723		1753	1823		1853	1923		1953	2023		2053	2123		2153	2223		2253	2323		2353				
Richmond	d		1629		1659	1729		1759	1829		1859	1929		1959	2029		2059	2129		2159	2229		2259	2329		2359				
Twickenham	d		1633		1703	1733		1803	1833		1903	1933		2003	2033		2103	2133		2203	2233		2303	2333		0003				
Hounslow	d		1626c			1726c			1826c			1926c			2026c			2126c			2226c			2326c						
Feltham	d		1639		1709	1739		1809	1839		1909	1939		2009	2039		2109	2139		2209	2239		2309	2339		0009				
Ashford	d		1636b		1700b	1736b		1800b	1836b		1900b	1936b		2000b	2036b		2100b	2136b			2236b			2336b						
Staines	d		1645		1715	1745		1815	1845		1915	1945		2015	2045		2115	2145		2215	2245		2315	2345		0015				
Egham	d		1650		1720	1750		1820	1850		1920	1950		2020	2050		2120	2150		2220	2250		2320	2350		0020				
Virginia Water	d		1654		1724	1754		1824	1854		1924	1954		2024	2054		2124	2154		2224	2254		2324	2354		0024				
Longcross	d																													
Sunningdale	d		1659		1729	1759		1829	1859		1929	1959		2029	2059		2129	2159		2229	2259		2329	2359		0029				
Ascot	d		1704		1734	1804		1834	1904		1934	2004		2034	2104		2134	2204		2234	2304		2334	0004		0034				
Martins Heron	d		1708		1738	1808		1838	1908		1938	2008		2038	2108		2138	2208		2238	2308		2338	0008		0038				
Bracknell	d		1711		1741	1811		1841	1911		1941	2011		2041	2111		2141	2211		2241	2311		2341	0011		0041				
Wokingham	d		1718	1726	1748	1818	1826	1848	1918	1926	1948	2018	2026	2048	2118	2126	2148	2218	2226	2248	2318	2326	2348	0018	0025	0048				
Winnersh	d		1721		1751	1821		1851	1921		1951	2021		2051	2121		2151	2221		2251	2321		2351	0021		0051				
Winnersh Triangle	d		1723		1753	1823		1853	1923		1953	2023		2053	2123		2153	2223		2253	2323		2353	0023		0053				
Earley	d		1726		1756	1826		1856	1926		1956	2026		2056	2126		2156	2226		2256	2326		2356	0026		0056				
Reading	a		1734	1735	1804	1834	1835	1904	1934	1935	2004	2034	2035	2104	2134	2136	2204	2234	2236	2304	2334	2339	0004	0034	0037	0101				

Late night and weekend trains may be altered due to engineering works. Please check at southwesttrains.co.uk before travelling.

GUIDE TO NOTES AND SYMBOLS

First Class accommodation also available on all trains shown in **bold type** except where otherwise shown.

- A** Also calls at Brentford 1831.
- B** Also calls at Brentford 1901.
- FX** Does not run on Friday evening.
- H** Also calls at Whitton 5 minutes later than Feltham.
- S** Standard class accommodation only.
 - a Arrival time.
 - b Change at Staines.
 - c Change at Feltham.
 - d Departure time.
 - e Change at Richmond.
 - g Change at Putney.
 - h Change at Clapham Junction.
- GW** Service operated by First Great Western.
- SW** Service operated by South West Trains.
- ↻ Interchange for London Underground. Visit tfl.gov.uk for details.
- 🅑 Car Park.
- ← Railair bus link to / from Heathrow Airport.

- ⌚ Minimum connection time where different from the standard five minutes.
- † Longcross station has a limited train service on Monday to Friday and **no** service on Saturday and Sunday.
- #4** Refers to Pocket Timetable number which shows the full service between this station and London Waterloo.

Travelling after midnight?

Trains which run after midnight are shown at the end of the day.

Rail improvement work will continue throughout the year in the Reading area. If you are travelling through Reading, please check your times before travelling.

Windsor Lines Passengers Association

WLPA represents users of rail services from Waterloo to Windsor and Reading including the Weybridge and Camberley branches and the Hounslow and Teddington loops.

Website: wlpa.co.uk

e-mail: membership@wlpa.co.uk

Cycles on trains - Monday to Friday

★ Passengers travelling with cycles may not join or leave services at stations with train times shown in red.

At peak times the following restrictions apply:

In the area bounded by Reading, Hook, Alton, Guildford and Dorking. Passengers travelling with cycles may not join or leave trains due to arrive at London Waterloo between 0715 and 1000 inclusive and departing from London Waterloo between 1645 and 1900 inclusive Monday to Friday.

In addition they may not join or leave any train departing from Clapham Junction between 0745 and 0900 Monday to Friday in an area bounded by Clapham Junction, Strawberry Hill and Feltham.

Some trains operated by First Great Western are also restricted in the Reading area and are marked in red. See First Great Western publicity for further details.

STATION INFORMATION

See notes for explanation of symbols.

Reading	🅑	⌚	
Earley			
Winnersh Triangle			
Winnersh			
Wokingham	🅑		
Bracknell	🅑		
Martins Heron	🅑		
Ascot	🅑	⌚	
Sunningdale	🅑		
Longcross		†	
Virginia Water	🅑	⌚	#16
Egham	🅑		#16
Staines	🅑		#4a
Ashford	🅑		#4a
Feltham	🅑	←	#4a
Hounslow	🅑		#7
Twickenham	🅑		#9
Richmond	🅑	↻	#9
Putney			#9
Clapham Junction		⌚	
Vauxhall	↻		
London Waterloo	↻	⌚	



Visit us at

southwesttrains.co.uk

- Buying tickets online
- Special offers and days out
- Live train information
- Plan your journey
- Train times
- Latest news



Free Travel Alerts

southwesttrains.co.uk/jca

Keeping our registered customers up-to-date with their service running information, delays and alterations.



Twitter

@SW_Trains

Follow South West Trains on Twitter and be the first to know what's happening on our network.



facebook.com/swtrains

Providing South West Trains Network information and details of our latest offers.



Customer Service Centre

0845 6000 650*

Our UK based team are available 7 days a week from 6am to 10pm for:

- Ticket sales by credit or debit card
- Comments and suggestions

*Calls charged at local rate and may be recorded.



Assisted Travel

0800 5282 100

Textphone 0800 6920 792

A freephone service open 6am - 10pm for older and disabled passengers.

We recommend booking assistance at least 24 hrs in advance.



National Rail Enquiries

Call National Rail Enquiries on **08457 48 49 50**

Train times, fares and rail information

Call Train Tracker on **0871 200 49 50**

Up to the minute times for today's trains

Text station name to Train Tracker **8 49 50**

Calls to TrainTracker cost 10p a minute from a BT fixed phone. Charges from other operators may vary.

TrainTracker is for direct trains only. TrainTracker texts cost 25p for each successful response (plus usual text costs).

South West Trains accepts no liability for any inaccuracy in the information contained in this publication which is subject to alteration. Please check before you travel. Stagecoach South Western Trains Limited.

Registered in England and Wales 5599788.

Registered office: Friars Bridge Court, 41-45 Blackfriars Road, London SE1 8NZ.

A part of the Stagecoach Group plc.



Please recycle